



A L T O Z A N O

LA NUEVA MORELIA



DTU

MODALIDAD A

CAPÍTULO III.

UBICACIÓN Y SUPERFICIE TOTAL DEL O LOS POLÍGONOS DONDE SE PRETENDA REALIZAR EL CAMBIO DE USO DEL SUELO EN LOS TERRENOS FORESTALES, PRECISANDO SU LOCALIZACIÓN GEOGRÁFICA EN LOS PLANOS DEL PREDIO CORRESPONDIENTE, LOS CUALES ESTARÁN GEORREFERENCIADOS Y EXPRESADOS EN COORDENADAS UTM.

PROYECTO:
CAMBIO DE USO DE SUELO EN
TERRENOS FORESTALES PARA
EL FRACCIONAMIENTO
BOSQUE MONARCA.

SEGA

PLANEACIÓN Y DESARROLLO



ÍNDICE

III. UBICACIÓN Y SUPERFICIE TOTAL DEL O LOS POLÍGONOS DONDE SE PRETENDA REALIZAR EL CUSTF, PRECISANDO SU LOCALIZACIÓN GEOGRÁFICA EN LOS PLANOS DEL PREDIO CORRESPONDIENTE, LOS CUALES ESTARÁN GEOREFERENCIADOS Y EXPRESADOS EN COORDENADAS UTM.....	6
III.1 UBICACIÓN GEOGRÁFICA DE LOS POLÍGONOS DONDE SE PRETENDA REALIZAR EL CUSTF	6
III.2 UBICACIÓN GEORREFERENCIADA DE LOS POLÍGONOS DONDE SE PRETENDE REALIZAR EL CAMBIO DE USO DEL SUELO EN LOS TERRENOS FORESTALES Y SUS COORDENADAS UTM.....	6
III.2.1 Coordenadas UTM del Polígono No. 1 de CUSTF.....	16
III.2.2 Coordenadas UTM del Polígono No. 2 de CUSTF.....	16
III.2.3 Coordenadas UTM del Polígono No. 3 de CUSTF.....	19
III.2.4 Coordenadas UTM del Polígono No. 4 de CUSTF.....	22
III.2.5 Coordenadas UTM del Polígono No. 5 de CUSTF.....	38
III.2.6 Coordenadas UTM del Polígono No. 6 de CUSTF.....	40
III.2.7 Coordenadas UTM del Polígono No. 7 de CUSTF.....	41
III.2.8 Coordenadas UTM del Polígono No. 8 de CUSTF.....	42

ÍNDICE DE TABLAS

Tabla III—1. Superficies susceptibles del cambio de uso del suelo en los terrenos forestales.....	6
---	---

ÍNDICE DE FIGURAS

Figura III—1. Ubicación de los ocho polígonos donde se pretende realizar el cambio de uso del suelo en los terrenos forestales.....	7
Figura III—2. Ubicación del polígono No. 1 donde pretende realizarse el cambio de uso del suelo en los terrenos forestales.....	8
Figura III—3. Ubicación del polígono No. 2 donde pretende realizarse el cambio de uso del suelo en los terrenos forestales.....	9
Figura III—4. Ubicación del polígono No. 3 donde pretende realizarse el cambio de uso del suelo en los terrenos forestales.....	10
Figura III—5. Ubicación del polígono No. 4 donde pretende realizarse el cambio de uso del suelo en los terrenos forestales.....	11
Figura III—6. Ubicación del polígono No. 5 donde pretende realizarse el cambio de uso del suelo en los terrenos forestales.....	12
Figura III—7. Ubicación del polígono No. 6 donde pretende realizarse el cambio de uso del suelo en los terrenos forestales.....	13
Figura III—8. Ubicación del polígono No. 7 donde pretende realizarse el cambio de uso del suelo en los terrenos forestales.....	14
Figura III—9. Ubicación del polígono No. 8 donde pretende realizarse el cambio de uso del suelo en los terrenos forestales.....	15

FUNDAMENTO JURÍDICO

La integración de este capítulo tiene por objeto dar cumplimiento a lo dispuesto en el “ACUERDO por el que se expiden los lineamientos y procedimientos para solicitar en un trámite único ante la Secretaría de Medio Ambiente y Recursos Naturales las autorizaciones en materia de impacto ambiental y en materia forestal que se indican y se asignan las atribuciones correspondientes en los servidores públicos que se señalan”, en cuyo artículo Primero establece lo siguiente:

Primero. *Se establecen los trámites unificados de aprovechamiento forestal y de cambio de uso de suelo forestal, este último en sus modalidades A y B ...*

El presente trámite único se presenta en su modalidad A con fundamento en lo dispuesto por la fracción IV del Artículo Segundo y conteniendo la información señalada por el Artículo Sexto del Acuerdo en cuestión, los cuales a letra dicen:

Segundo. *Para los efectos del presente Acuerdo se entenderá por:*

...

IV. *Trámite unificado de cambio de uso de suelo forestal, modalidad A: es el que integra en un solo procedimiento administrativo el trámite relativo a la autorización en materia de impacto ambiental para las obras o actividades descritas sólo en la fracción VII del artículo 28 de la Ley General del Equilibrio Ecológico y la Protección al Ambiente y el correspondiente a la autorización de cambio de uso de suelo forestal previsto en el artículo 117 de la Ley General de Desarrollo Forestal Sustentable.*

...

Sexto. *El documento técnico unificado correspondiente al trámite unificado de cambio de uso de suelo forestal modalidad A, contendrá la información indicada en los artículos 117 de la Ley General de Desarrollo Forestal Sustentable (actualmente Artículo 93 de Nueva Ley publicada en el Diario Oficial de la Federación el 5 de junio de 2018).y 121 de su Reglamento (actualmente Artículo 141 del Nuevo reglamento de la Ley General de Desarrollo Forestal Sustentable publicado en el Diario Oficial de la Federación el 9 de diciembre de 2020), así como la señalada en el artículo 12, fracciones I, III, V y VIII, del Reglamento de la Ley General del Equilibrio Ecológico y la Protección al Ambiente en materia de Evaluación del Impacto Ambiental.*

Con base en lo anterior, el presente capítulo se centrará en dar cumplimiento a lo dispuesto por la Fracción II del Artículo 141 del Nuevo Reglamento de la Ley General de Desarrollo Forestal Sustentable, que señala lo siguiente:

Reglamento de la Ley General de Desarrollo Forestal Sustentable

Artículo 141. *Los estudios técnicos justificativos a que se refiere el artículo 93 de la Ley, deberán contener, por lo menos, lo siguiente:*

...

II. *Ubicación y superficie total del o los polígonos donde se pretenda realizar el Cambio de uso del suelo en los Terrenos forestales, precisando su localización geográfica en los planos del predio correspondiente, los cuales estarán georeferenciados y expresados en coordenadas UTM;*

Acorde con lo señalado previamente, en este apartado se presentan las ocho poligonales donde pretende ejecutarse el CUSTF, así como las coordenadas UTM que los definen.

III. UBICACIÓN Y SUPERFICIE TOTAL DEL O LOS POLÍGONOS DONDE SE PRETENDA REALIZAR EL CUSTF, PRECISANDO SU LOCALIZACIÓN GEOGRÁFICA EN LOS PLANOS DEL PREDIO CORRESPONDIENTE, LOS CUALES ESTARÁN GEOREFERENCIADOS Y EXPRESADOS EN COORDENADAS UTM

III.1 UBICACIÓN GEOGRÁFICA DE LOS POLÍGONOS DONDE SE PRETENDA REALIZAR EL CUSTF

Como ya se ha manifestado en los Capítulos I y II, el predio del Fraccionamiento Bosque Monarca en el cual se solicita realizar el Cambio de Uso de Suelo en Terrenos Forestales (CUSTF) por una superficie de 17.16 ha, se ubica en la Tenencia de Jesús del Monte, en la Ciudad de Morelia, Michoacán. La superficie de CUSTF se divide en un total de ocho (8) polígonos irregulares y de superficie variable, como lo muestra la siguiente tabla y la Figura III-1.

Tabla III—1. Superficies susceptibles del cambio de uso del suelo en los terrenos forestales

Polígonos	Superficie (m ²)	Superficie (Ha)
1	1,466.61	0.15
2	14,695.08	1.47
3	10,086.45	1.01
4	114,979.35	11.50
5	4,238.76	0.42
6	4,396.45	0.44
7	4,313.87	0.43
8	17,405.74	1.74
Total	171,582.31	17.16

III.2 UBICACIÓN GEORREFERENCIADA DE LOS POLÍGONOS DONDE SE PRETENDE REALIZAR EL CAMBIO DE USO DEL SUELO EN LOS TERRENOS FORESTALES Y SUS COORDENADAS UTM

En las Figuras III-2 a III-9 se muestra la ubicación de los ocho polígonos en las que se solicita el CUSTF, seguido de sus tablas de coordenadas UTM.

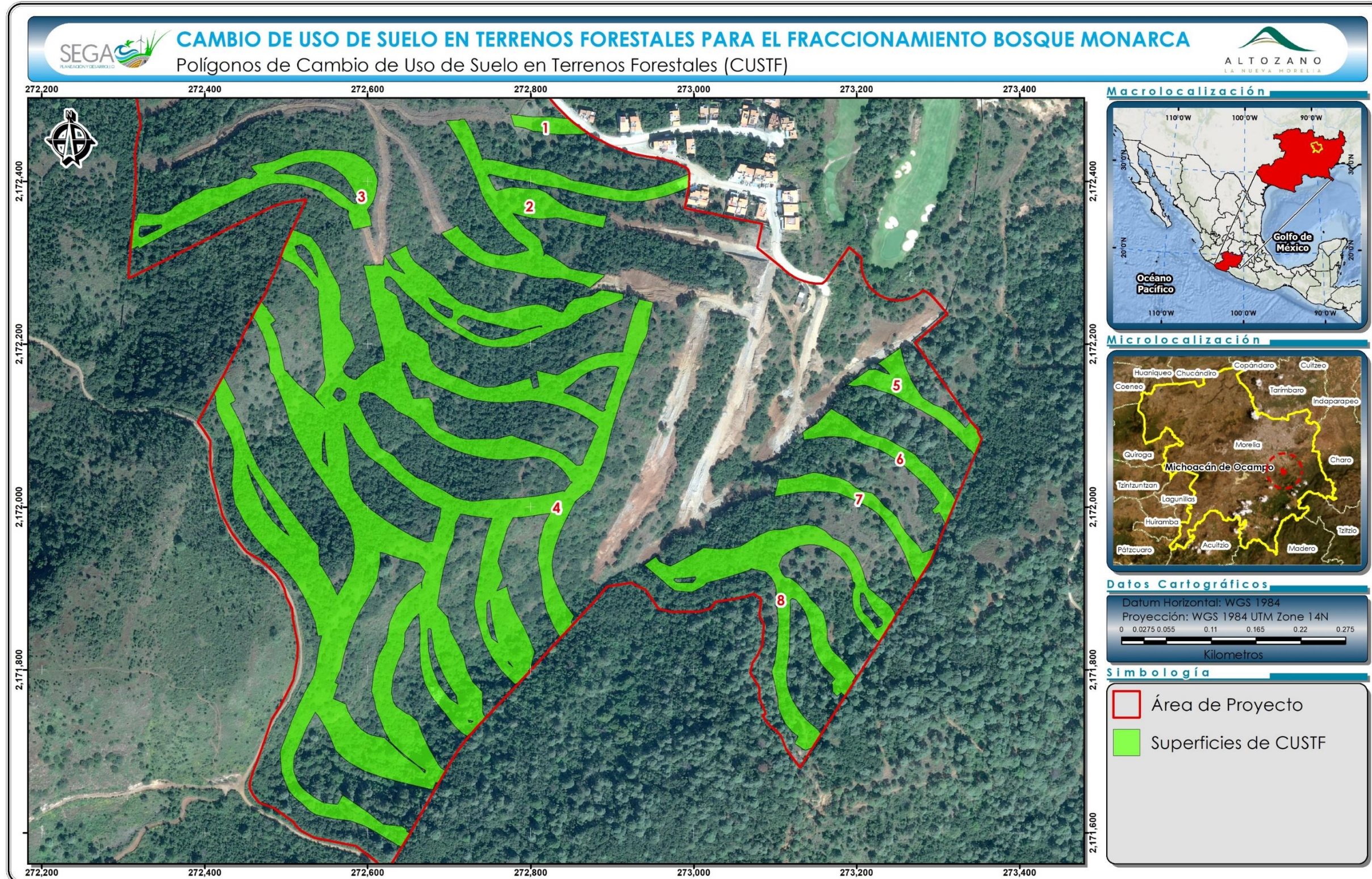


Figura III—1. Ubicación de los ocho polígonos donde se pretende realizar el cambio de uso del suelo en los terrenos forestales

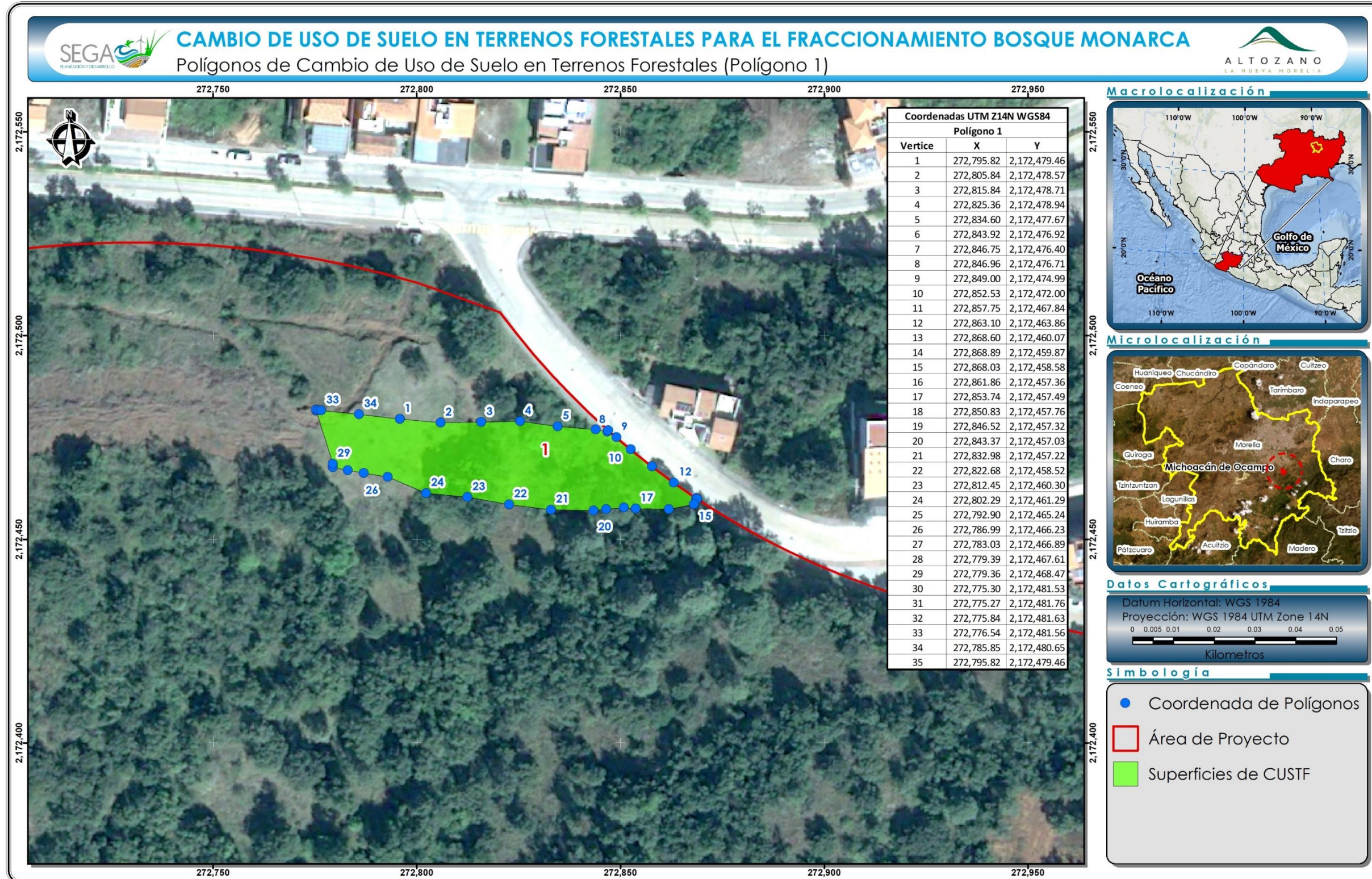


Figura III—2. Ubicación del polígono No. 1 donde pretende realizarse el cambio de uso del suelo en los terrenos forestales

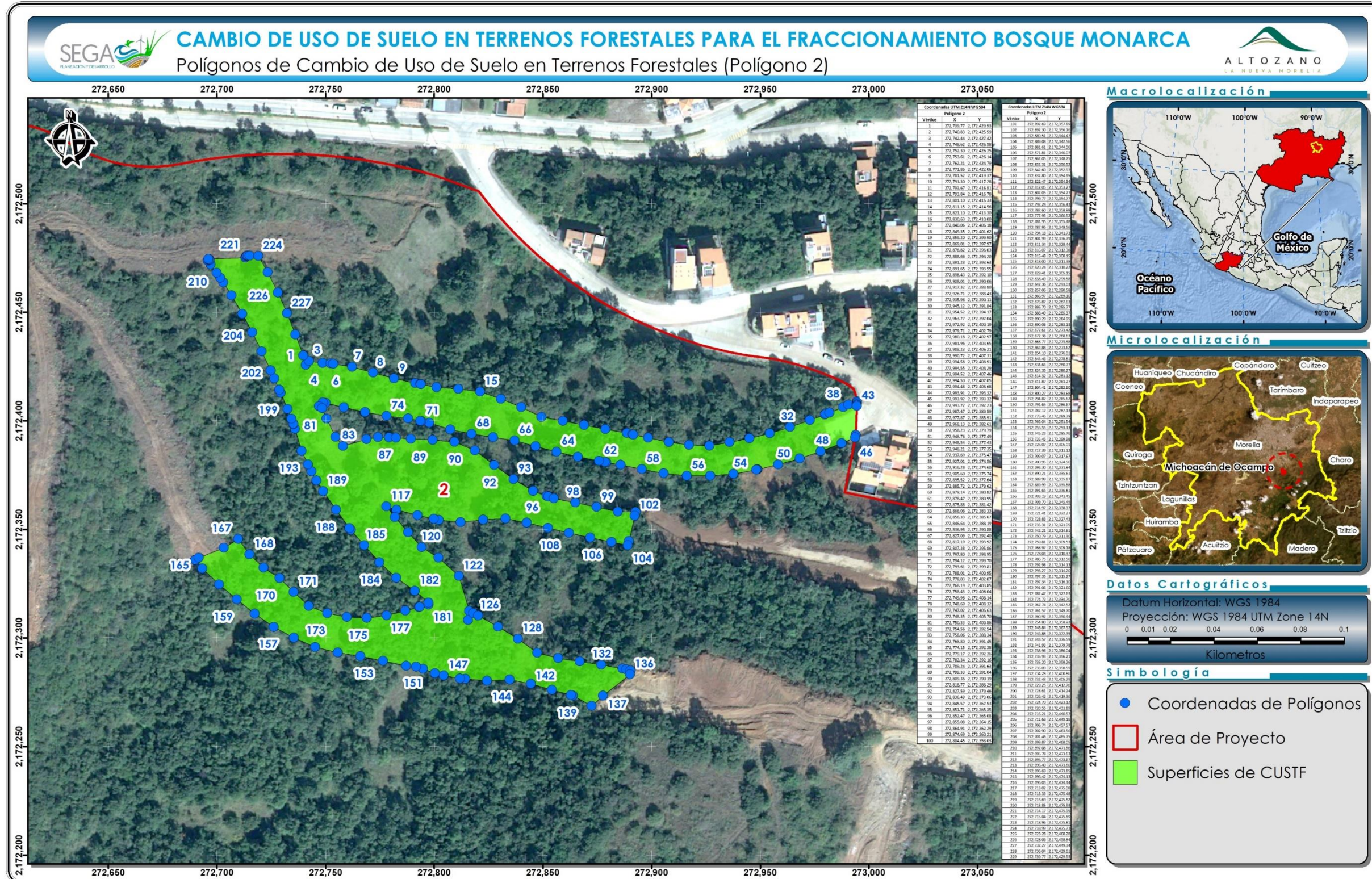


Figura III—3. Ubicación del polígono No. 2 donde pretende realizarse el cambio de uso del suelo en los terrenos forestales

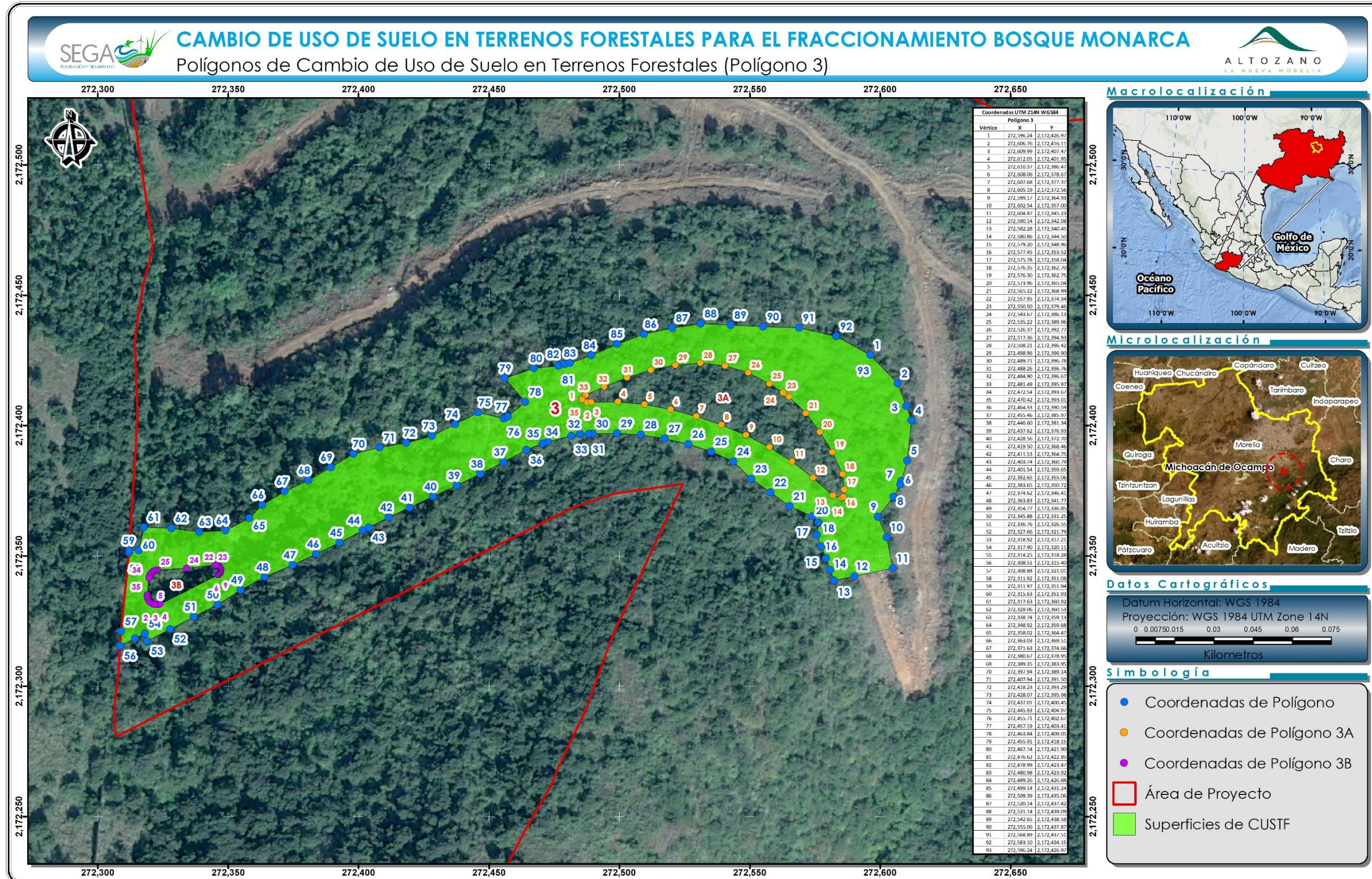
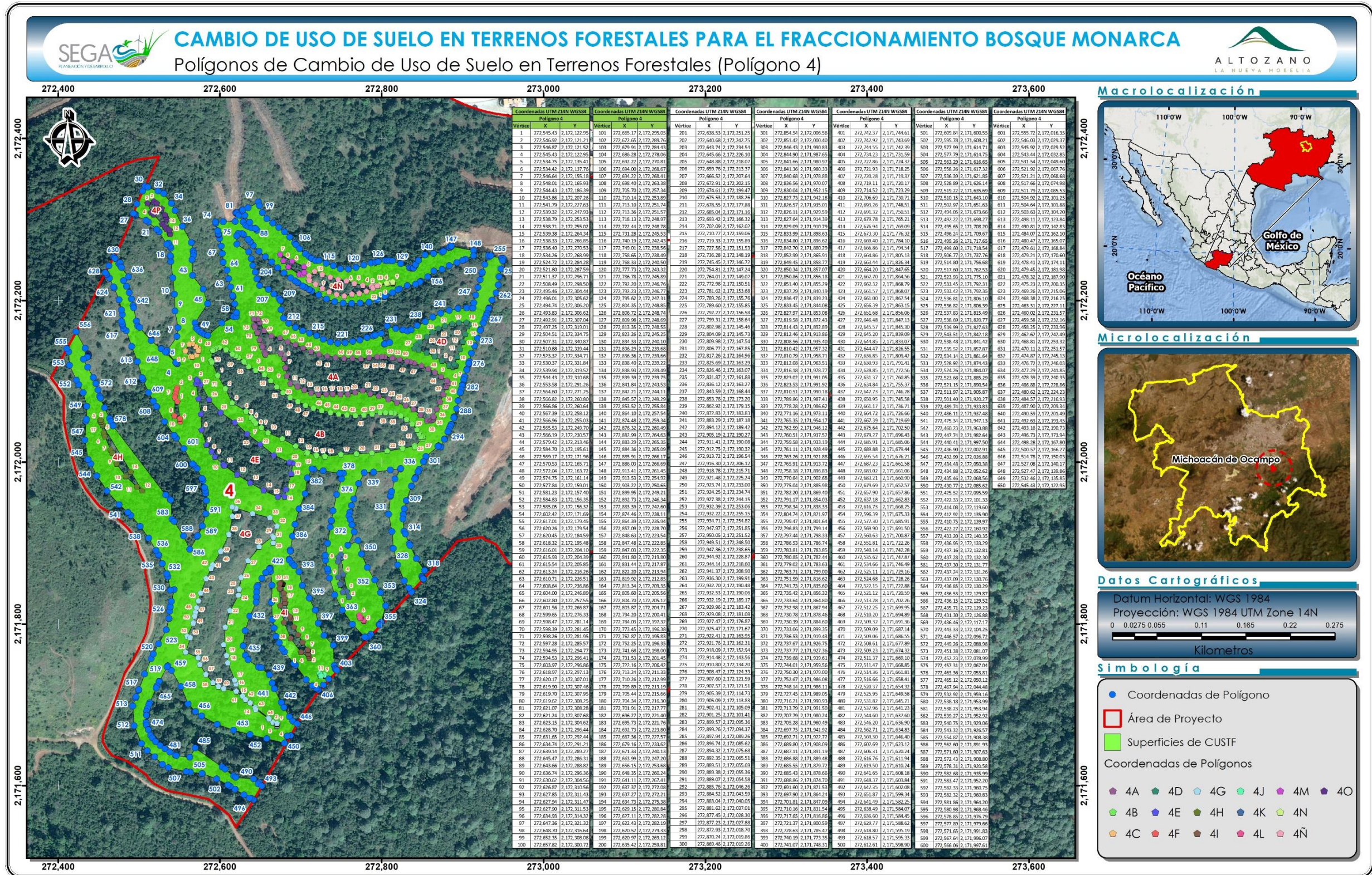


Figura III—4. Ubicación del polígono No. 3 donde pretende realizarse el cambio de uso del suelo en los terrenos forestales



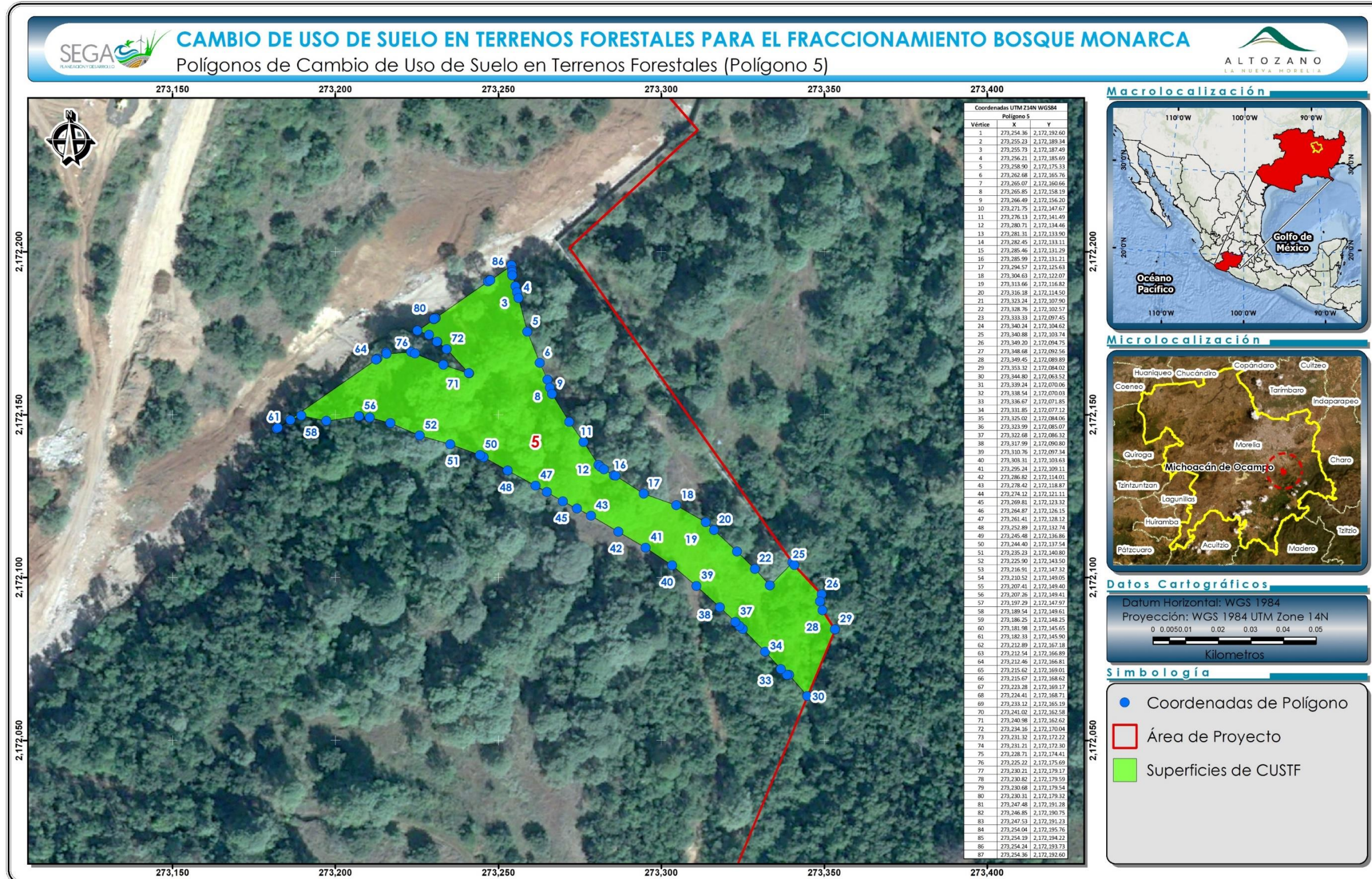


Figura III—6. Ubicación del polígono No. 5 donde pretende realizarse el cambio de uso del suelo en los terrenos forestales

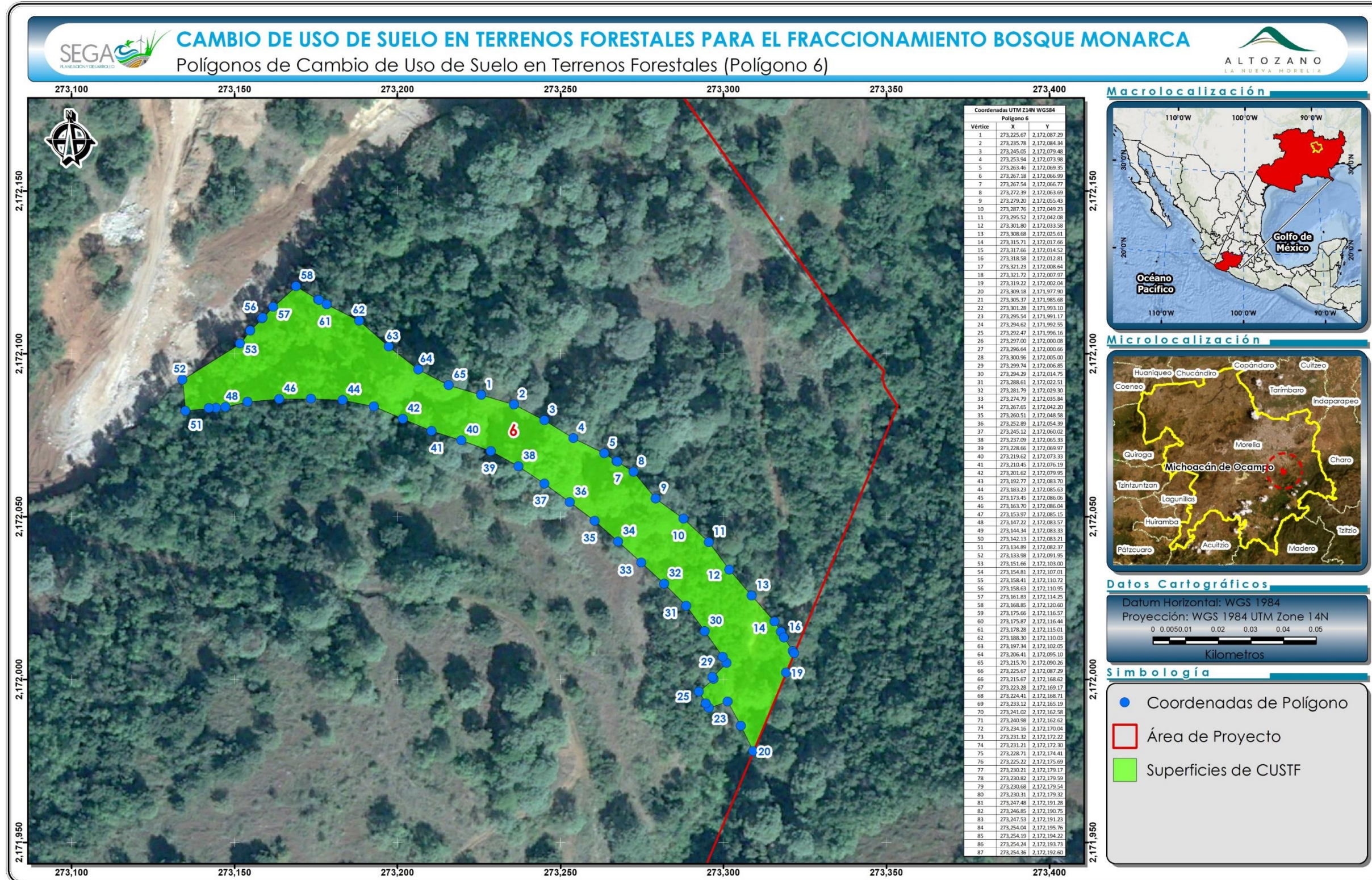


Figura III—7. Ubicación del polígono No. 6 donde pretende realizarse el cambio de uso del suelo en los terrenos forestales

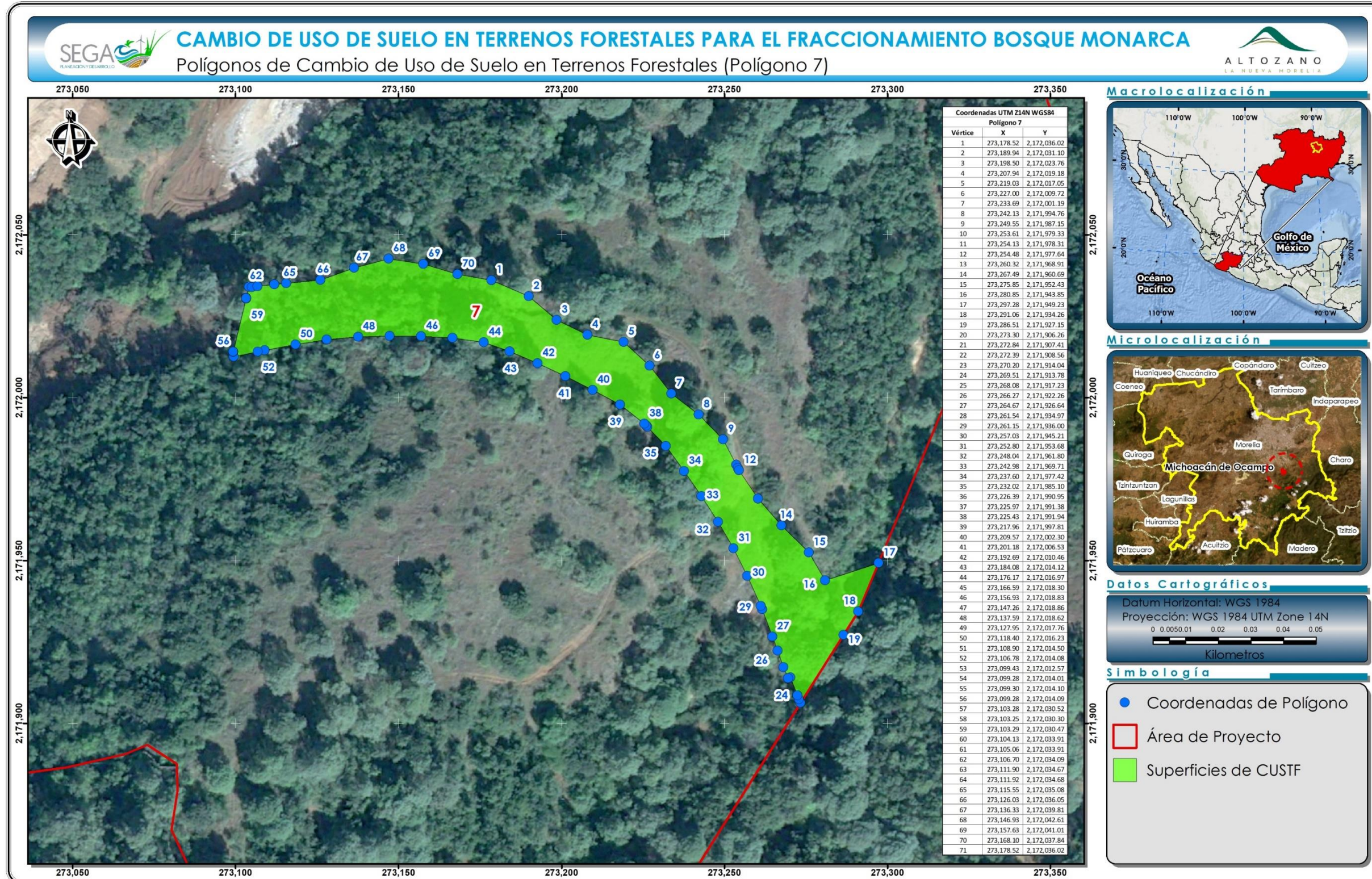


Figura III—8. Ubicación del polígono No. 7 donde pretende realizarse el cambio de uso del suelo en los terrenos forestales

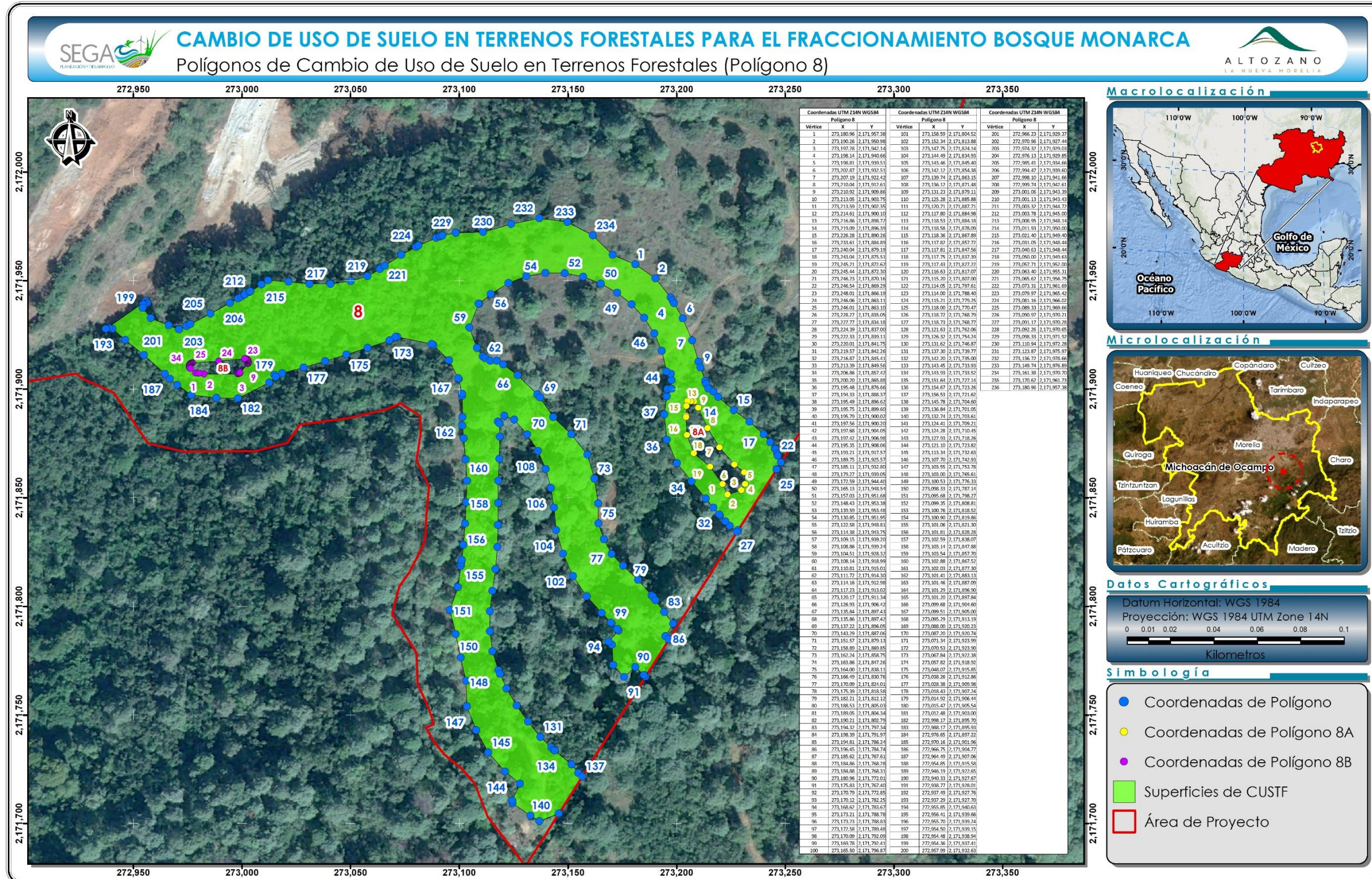


Figura III—9. Ubicación del polígono No. 8 donde pretende realizarse el cambio de uso del suelo en los terrenos forestales

III.2.1 Coordenadas UTM del Polígono No. 1 de CUSTF.

Coordenadas UTM Z14N WGS84		
Polígono 1		
vértice	X	Y
1	272,795.82	2,172,479.46
2	272,805.84	2,172,478.57
3	272,815.84	2,172,478.71
4	272,825.36	2,172,478.94
5	272,834.60	2,172,477.67
6	272,843.92	2,172,476.92
7	272,846.75	2,172,476.40
8	272,846.96	2,172,476.71
9	272,849.00	2,172,474.99
10	272,852.53	2,172,472.00
11	272,857.75	2,172,467.84
12	272,863.10	2,172,463.86
13	272,868.60	2,172,460.07
14	272,868.89	2,172,459.87
15	272,868.03	2,172,458.58
16	272,861.86	2,172,457.36
17	272,853.74	2,172,457.49
18	272,850.83	2,172,457.76
19	272,846.52	2,172,457.32
20	272,843.37	2,172,457.03
21	272,832.98	2,172,457.22
22	272,822.68	2,172,458.52
23	272,812.45	2,172,460.30
24	272,802.29	2,172,461.29
25	272,792.90	2,172,465.24
26	272,786.99	2,172,466.23
27	272,783.03	2,172,466.89
28	272,779.39	2,172,467.61
29	272,779.36	2,172,468.47
30	272,775.30	2,172,481.53
31	272,775.27	2,172,481.76
32	272,775.84	2,172,481.63
33	272,776.54	2,172,481.56

Coordenadas UTM Z14N WGS84		
Polígono 1		
vértice	X	Y
34	272,785.85	2,172,480.65
35	272,795.82	2,172,479.46

III.2.2 Coordenadas UTM del Polígono No. 2 de CUSTF

Coordenadas UTM Z14N WGS84		
Polígono 2		
Vértice	X	Y
1	272,739.77	2,172,429.93
2	272,740.83	2,172,425.59
3	272,742.44	2,172,427.42
4	272,748.62	2,172,426.58
5	272,752.30	2,172,426.25
6	272,753.61	2,172,426.14
7	272,762.21	2,172,424.79
8	272,771.86	2,172,422.06
9	272,781.52	2,172,419.37
10	272,791.30	2,172,417.28
11	272,793.67	2,172,416.81
12	272,793.84	2,172,416.78
13	272,801.10	2,172,415.33
14	272,811.15	2,172,414.56
15	272,821.10	2,172,413.30
16	272,830.63	2,172,410.00
17	272,840.06	2,172,406.18
18	272,849.35	2,172,401.62
19	272,859.20	2,172,399.90
20	272,869.01	2,172,397.97
21	272,878.82	2,172,396.03
22	272,888.66	2,172,394.20
23	272,891.28	2,172,393.63
24	272,891.65	2,172,393.55
25	272,898.43	2,172,392.10
26	272,908.01	2,172,390.06

Coordenadas UTM Z14N WGS84		
Polígono 2		
Vértice	X	Y
27	272,917.32	2,172,388.80
28	272,926.71	2,172,388.43
29	272,935.98	2,172,390.11
30	272,945.12	2,172,391.84
31	272,954.52	2,172,394.17
32	272,963.77	2,172,397.04
33	272,972.92	2,172,400.19
34	272,979.71	2,172,402.79
35	272,980.18	2,172,402.97
36	272,981.96	2,172,403.65
37	272,988.23	2,172,406.21
38	272,990.72	2,172,407.31
39	272,994.58	2,172,408.91
40	272,994.55	2,172,408.29
41	272,994.52	2,172,407.46
42	272,994.50	2,172,407.05
43	272,994.48	2,172,406.68
44	272,993.91	2,172,393.32
45	272,993.92	2,172,393.32
46	272,993.72	2,172,392.23
47	272,987.47	2,172,389.59
48	272,977.87	2,172,385.91
49	272,968.13	2,172,382.61
50	272,958.23	2,172,379.79
51	272,948.76	2,172,377.49
52	272,948.54	2,172,377.43
53	272,948.21	2,172,377.35
54	272,937.69	2,172,375.47
55	272,927.01	2,172,374.56
56	272,916.28	2,172,374.60
57	272,905.60	2,172,375.74
58	272,895.52	2,172,377.64
59	272,885.72	2,172,379.62
60	272,879.14	2,172,380.82
61	272,878.47	2,172,380.95
62	272,875.88	2,172,381.42

Coordenadas UTM Z14N WGS84		
Polígono 2		
Vértice	X	Y
63	272,866.06	2,172,383.33
64	272,856.33	2,172,385.67
65	272,846.64	2,172,388.19
66	272,836.98	2,172,390.88
67	272,827.09	2,172,392.40
68	272,817.19	2,172,393.92
69	272,807.38	2,172,395.86
70	272,797.80	2,172,398.95
71	272,794.12	2,172,399.70
72	272,793.61	2,172,399.81
73	272,788.01	2,172,400.95
74	272,778.03	2,172,402.07
75	272,768.19	2,172,403.85
76	272,758.43	2,172,406.04
77	272,749.98	2,172,408.14
78	272,748.69	2,172,408.32
79	272,747.02	2,172,406.63
80	272,748.35	2,172,405.70
81	272,750.33	2,172,400.86
82	272,754.56	2,172,392.54
83	272,758.06	2,172,388.34
84	272,768.80	2,172,391.45
85	272,774.15	2,172,392.38
86	272,779.17	2,172,392.26
87	272,782.34	2,172,392.16
88	272,789.24	2,172,391.63
89	272,799.33	2,172,391.04
90	272,809.36	2,172,390.19
91	272,818.77	2,172,386.29
92	272,827.59	2,172,379.46
93	272,836.49	2,172,373.06
94	272,845.57	2,172,367.53
95	272,851.71	2,172,365.35
96	272,852.47	2,172,365.08
97	272,855.08	2,172,364.15
98	272,864.91	2,172,362.29

Coordenadas UTM Z14N WGS84		
Polígono 2		
Vértice	X	Y
99	272,874.69	2,172,360.21
100	272,884.45	2,172,358.03
101	272,892.69	2,172,357.89
102	272,892.30	2,172,356.16
103	272,889.51	2,172,344.47
104	272,889.08	2,172,342.56
105	272,881.61	2,172,344.06
106	272,871.81	2,172,346.07
107	272,862.05	2,172,348.25
108	272,852.31	2,172,350.52
109	272,842.60	2,172,352.97
110	272,832.80	2,172,354.95
111	272,822.47	2,172,354.34
112	272,812.05	2,172,353.27
113	272,802.05	2,172,354.27
114	272,799.77	2,172,354.77
115	272,792.28	2,172,356.43
116	272,782.60	2,172,358.98
117	272,777.95	2,172,360.52
118	272,781.95	2,172,355.48
119	272,787.95	2,172,348.56
120	272,794.18	2,172,341.73
121	272,801.99	2,172,336.79
122	272,811.34	2,172,328.44
123	272,816.07	2,172,312.38
124	272,815.48	2,172,308.15
125	272,818.00	2,172,311.38
126	272,820.24	2,172,310.22
127	272,829.41	2,172,305.15
128	272,838.49	2,172,299.58
129	272,847.36	2,172,293.03
130	272,857.06	2,172,290.58
131	272,866.97	2,172,289.10
132	272,876.87	2,172,287.63
133	272,886.70	2,172,285.77
134	272,888.49	2,172,285.37

Coordenadas UTM Z14N WGS84		
Polígono 2		
Vértice	X	Y
135	272,890.29	2,172,284.95
136	272,890.06	2,172,283.13
137	272,877.61	2,172,273.42
138	272,872.38	2,172,268.63
139	272,863.77	2,172,273.38
140	272,862.88	2,172,273.62
141	272,854.10	2,172,276.01
142	272,844.46	2,172,278.81
143	272,834.66	2,172,280.77
144	272,824.35	2,172,280.27
145	272,814.32	2,172,281.12
146	272,811.87	2,172,281.27
147	272,804.41	2,172,282.60
148	272,800.27	2,172,283.68
149	272,794.82	2,172,285.62
150	272,791.65	2,172,286.67
151	272,787.12	2,172,287.13
152	272,776.46	2,172,289.39
153	272,766.04	2,172,291.54
154	272,755.55	2,172,293.13
155	272,745.23	2,172,295.76
156	272,735.45	2,172,299.98
157	272,726.07	2,172,305.01
158	272,717.39	2,172,311.12
159	272,709.07	2,172,317.67
160	272,700.95	2,172,324.50
161	272,693.30	2,172,331.94
162	272,690.21	2,172,335.61
163	272,689.99	2,172,335.87
164	272,689.99	2,172,335.88
165	272,691.65	2,172,336.81
166	272,703.19	2,172,341.45
167	272,709.70	2,172,345.49
168	272,714.97	2,172,338.37
169	272,721.41	2,172,332.27
170	272,728.83	2,172,327.43

Coordenadas UTM Z14N WGS84		
Polígono 2		
Vértice	X	Y
171	272,735.31	2,172,321.05
172	272,742.21	2,172,314.61
173	272,750.79	2,172,311.30
174	272,759.81	2,172,309.53
175	272,768.97	2,172,309.18
176	272,778.04	2,172,310.37
177	272,786.75	2,172,312.50
178	272,792.98	2,172,314.13
179	272,793.27	2,172,314.20
180	272,797.35	2,172,315.27
181	272,797.34	2,172,316.10
182	272,791.06	2,172,321.60
183	272,782.47	2,172,327.63
184	272,774.72	2,172,334.70
185	272,767.74	2,172,342.52
186	272,761.57	2,172,349.70
187	272,760.92	2,172,350.44
188	272,754.80	2,172,358.92
189	272,748.84	2,172,367.52
190	272,745.88	2,172,372.39
191	272,743.57	2,172,376.59
192	272,741.93	2,172,379.78
193	272,738.96	2,172,386.04
194	272,735.93	2,172,396.21
195	272,735.20	2,172,398.26
196	272,735.09	2,172,398.59
197	272,734.28	2,172,400.86
198	272,732.43	2,172,405.29
199	272,729.25	2,172,412.76
200	272,728.61	2,172,414.24
201	272,726.42	2,172,419.36
202	272,724.70	2,172,423.12
203	272,720.55	2,172,431.89
204	272,716.21	2,172,440.57
205	272,711.68	2,172,449.18
206	272,706.74	2,172,457.57

Coordenadas UTM Z14N WGS84		
Polígono 2		
Vértice	X	Y
207	272,702.90	2,172,463.56
208	272,701.46	2,172,465.75
209	272,699.87	2,172,468.05
210	272,697.08	2,172,471.86
211	272,695.78	2,172,473.63
212	272,695.77	2,172,473.67
213	272,696.40	2,172,473.80
214	272,696.69	2,172,473.85
215	272,696.42	2,172,474.13
216	272,696.03	2,172,474.44
217	272,713.02	2,172,475.08
218	272,713.33	2,172,475.48
219	272,713.69	2,172,475.82
220	272,713.85	2,172,475.93
221	272,714.17	2,172,475.95
222	272,715.04	2,172,475.89
223	272,718.96	2,172,475.81
224	272,718.99	2,172,475.73
225	272,723.28	2,172,468.28
226	272,728.06	2,172,458.94
227	272,732.27	2,172,449.34
228	272,736.04	2,172,439.61
229	272,739.77	2,172,429.93

III.2.3 Coordenadas UTM del Polígono No. 3 de CUSTF

Coordenadas UTM Z14N WGS84		
Polígono 3		
Vértice	X	Y
1	272,596.24	2,172,426.97
2	272,606.76	2,172,416.11
3	272,609.99	2,172,407.47
4	272,612.05	2,172,401.95

Coordenadas UTM Z14N WGS84		
Polígono 3		
Vértice	X	Y
5	272,610.37	2,172,386.47
6	272,608.06	2,172,378.67
7	272,607.68	2,172,377.37
8	272,605.19	2,172,372.56
9	272,599.17	2,172,364.93
10	272,602.54	2,172,357.00
11	272,604.87	2,172,345.23
12	272,590.14	2,172,342.08
13	272,582.28	2,172,340.45
14	272,580.86	2,172,344.50
15	272,579.20	2,172,348.96
16	272,577.45	2,172,353.52
17	272,575.78	2,172,358.04
18	272,576.35	2,172,362.70
19	272,576.30	2,172,362.75
20	272,573.96	2,172,365.04
21	272,565.22	2,172,368.99
22	272,557.95	2,172,374.34
23	272,550.50	2,172,379.46
24	272,543.67	2,172,386.13
25	272,535.22	2,172,389.96
26	272,526.37	2,172,392.77
27	272,517.36	2,172,394.93
28	272,508.21	2,172,396.42
29	272,498.96	2,172,396.90
30	272,489.71	2,172,396.78
31	272,488.26	2,172,396.76
32	272,484.90	2,172,396.67
33	272,481.49	2,172,395.97
34	272,472.54	2,172,393.67
35	272,470.42	2,172,393.01
36	272,464.33	2,172,390.59
37	272,455.46	2,172,385.97
38	272,446.60	2,172,381.34
39	272,437.62	2,172,376.93
40	272,428.56	2,172,372.70

Coordenadas UTM Z14N WGS84		
Polígono 3		
Vértice	X	Y
41	272,419.50	2,172,368.46
42	272,411.53	2,172,364.75
43	272,403.74	2,172,360.79
44	272,401.54	2,172,359.65
45	272,392.65	2,172,355.06
46	272,383.65	2,172,350.72
47	272,374.62	2,172,346.41
48	272,363.83	2,172,341.77
49	272,354.77	2,172,336.85
50	272,345.88	2,172,331.25
51	272,336.76	2,172,326.55
52	272,327.66	2,172,321.79
53	272,318.92	2,172,317.21
54	272,317.90	2,172,320.11
55	272,314.25	2,172,318.28
56	272,308.51	2,172,315.40
57	272,308.88	2,172,321.01
58	272,311.92	2,172,351.08
59	272,311.97	2,172,351.94
60	272,315.63	2,172,351.93
61	272,317.63	2,172,360.92
62	272,328.06	2,172,360.53
63	272,338.74	2,172,359.13
64	272,348.92	2,172,359.68
65	272,358.02	2,172,364.47
66	272,363.03	2,172,369.51
67	272,371.63	2,172,374.66
68	272,380.67	2,172,378.95
69	272,389.35	2,172,383.95
70	272,397.94	2,172,389.14
71	272,407.94	2,172,391.50
72	272,418.23	2,172,393.29
73	272,428.07	2,172,395.98
74	272,437.01	2,172,400.45
75	272,445.93	2,172,404.97
76	272,455.71	2,172,402.67

Coordenadas UTM Z14N WGS84		
Polígono 3		
Vértice	X	Y
77	272,457.19	2,172,403.41
78	272,463.84	2,172,409.05
79	272,455.91	2,172,418.15
80	272,467.14	2,172,421.90
81	272,476.62	2,172,422.85
82	272,478.99	2,172,423.47
83	272,480.98	2,172,423.92
84	272,489.26	2,172,426.88
85	272,499.14	2,172,431.24
86	272,509.39	2,172,435.06
87	272,520.14	2,172,437.42
88	272,531.14	2,172,439.09
89	272,542.65	2,172,438.58
90	272,555.06	2,172,437.87
91	272,568.89	2,172,437.51
92	272,583.10	2,172,434.15
93	272,596.24	2,172,426.97

Coordenadas UTM Z14N WGS84		
Polígono interno 3A (no CUSTF)		
Vértice	X	Y
1	272,485.69	2,172,409.82
2	272,487.54	2,172,408.78
3	272,489.15	2,172,408.90
4	272,499.39	2,172,409.08
5	272,509.58	2,172,408.07
6	272,519.62	2,172,406.13
7	272,529.48	2,172,403.54
8	272,539.10	2,172,400.18
9	272,548.52	2,172,396.31
10	272,557.55	2,172,391.60
11	272,566.20	2,172,386.19
12	272,574.21	2,172,379.88
13	272,581.86	2,172,373.15
14	272,585.13	2,172,372.01
15	272,585.64	2,172,372.31

Coordenadas UTM Z14N WGS84		
Polígono interno 3A (no CUSTF)		
Vértice	X	Y
16	272,585.90	2,172,372.53
17	272,586.18	2,172,375.32
18	272,585.62	2,172,381.27
19	272,581.68	2,172,389.74
20	272,576.92	2,172,397.48
21	272,571.54	2,172,404.71
22	272,565.06	2,172,410.99
23	272,563.09	2,172,412.29
24	272,562.68	2,172,412.55
25	272,557.50	2,172,415.96
26	272,549.39	2,172,420.22
27	272,540.52	2,172,422.89
28	272,531.05	2,172,423.95
29	272,521.43	2,172,423.03
30	272,511.99	2,172,421.30
31	272,502.88	2,172,418.35
32	272,494.09	2,172,414.77
33	272,487.05	2,172,411.60
34	272,485.72	2,172,410.40
35	272,485.69	2,172,409.82

Coordenadas UTM Z14N WGS84		
Polígono interno 3B (no CUSTF)		
Vértice	X	Y
1	272,321.74	2,172,331.24
2	272,322.31	2,172,331.18
3	272,322.88	2,172,331.21
4	272,323.44	2,172,331.34
5	272,323.98	2,172,331.55
6	272,346.06	2,172,342.63
7	272,346.34	2,172,342.80
8	272,346.59	2,172,343.02
9	272,346.80	2,172,343.27
10	272,346.96	2,172,343.55

Coordenadas UTM Z14N WGS84		
Polígono interno 3B (no CUSTF)		
Vértice	X	Y
11	272,347.08	2,172,343.86
12	272,347.15	2,172,344.19
13	272,347.16	2,172,344.52
14	272,347.11	2,172,344.84
15	272,347.02	2,172,345.16
16	272,346.87	2,172,345.45
17	272,346.68	2,172,345.72
18	272,346.44	2,172,345.95
19	272,346.17	2,172,346.14
20	272,345.87	2,172,346.28
21	272,345.56	2,172,346.38
22	272,345.23	2,172,346.41
23	272,344.90	2,172,346.40
24	272,333.93	2,172,345.22
25	272,322.91	2,172,344.56
26	272,322.35	2,172,344.50
27	272,321.81	2,172,344.35
28	272,321.31	2,172,344.11
29	272,320.85	2,172,343.80
30	272,320.44	2,172,343.42
31	272,320.10	2,172,342.98
32	272,319.83	2,172,342.48
33	272,319.65	2,172,341.96
34	272,319.55	2,172,341.41
35	272,318.92	2,172,335.02
36	272,318.91	2,172,334.45
37	272,319.00	2,172,333.88
38	272,319.18	2,172,333.33
39	272,319.44	2,172,332.82
40	272,319.78	2,172,332.36
41	272,320.20	2,172,331.97
42	272,320.67	2,172,331.64
43	272,321.19	2,172,331.40
44	272,321.74	2,172,331.24

III.2.4 Coordenadas UTM del Polígono No. 4 de CUSTF

Coordenadas UTM Z14N WGS84		
Polígono 4		
Vértice	X	Y
1	272,545.43	2,172,122.95
2	272,546.92	2,172,121.21
3	272,546.87	2,172,121.52
4	272,545.43	2,172,122.95
5	272,534.75	2,172,135.41
6	272,534.42	2,172,137.76
7	272,546.64	2,172,155.18
8	272,548.01	2,172,165.93
9	272,544.43	2,172,186.39
10	272,543.86	2,172,207.26
11	272,541.79	2,172,227.63
12	272,539.32	2,172,247.93
13	272,538.79	2,172,253.53
14	272,538.71	2,172,255.02
15	272,539.38	2,172,264.34
16	272,538.33	2,172,266.85
17	272,536.40	2,172,270.53
18	272,534.26	2,172,268.99
19	272,524.72	2,172,284.28
20	272,521.80	2,172,287.59
21	272,511.37	2,172,296.71
22	272,508.49	2,172,298.50
23	272,495.46	2,172,304.44
24	272,496.01	2,172,305.62
25	272,494.74	2,172,306.20
26	272,493.83	2,172,306.62
27	272,492.91	2,172,307.04
28	272,497.25	2,172,319.01
29	272,504.51	2,172,334.75
30	272,507.31	2,172,340.87
31	272,510.88	2,172,339.44
32	272,523.32	2,172,334.71
33	272,530.37	2,172,331.84
34	272,539.94	2,172,319.52

Coordenadas UTM Z14N WGS84		
Polígono 4		
Vértice	X	Y
35	272,544.43	2,172,310.68
36	272,553.58	2,172,291.26
37	272,564.60	2,172,271.25
38	272,566.82	2,172,260.80
39	272,566.86	2,172,260.64
40	272,567.39	2,172,258.12
41	272,566.96	2,172,255.03
42	272,565.53	2,172,249.70
43	272,566.19	2,172,230.57
44	272,579.42	2,172,213.46
45	272,584.70	2,172,195.61
46	272,569.17	2,172,171.96
47	272,570.53	2,172,165.71
48	272,572.04	2,172,163.72
49	272,574.75	2,172,161.14
50	272,577.84	2,172,159.01
51	272,581.23	2,172,157.40
52	272,584.83	2,172,156.35
53	272,585.05	2,172,156.32
54	272,602.42	2,172,171.69
55	272,617.01	2,172,179.45
56	272,620.26	2,172,179.54
57	272,620.45	2,172,184.59
58	272,618.32	2,172,195.48
59	272,616.01	2,172,204.10
60	272,615.93	2,172,204.39
61	272,615.54	2,172,205.85
62	272,613.24	2,172,216.26
63	272,610.71	2,172,226.51
64	272,608.64	2,172,236.86
65	272,604.00	2,172,246.89
66	272,602.80	2,172,257.55
67	272,601.56	2,172,266.87
68	272,599.65	2,172,276.33
69	272,598.47	2,172,281.14
70	272,598.39	2,172,281.45

Coordenadas UTM Z14N WGS84		
Polígono 4		
Vértice	X	Y
71	272,598.26	2,172,281.95
72	272,597.28	2,172,285.57
73	272,594.95	2,172,294.77
74	272,594.53	2,172,296.41
75	272,603.97	2,172,296.86
76	272,618.97	2,172,297.13
77	272,620.17	2,172,307.01
78	272,619.90	2,172,307.46
79	272,619.70	2,172,307.95
80	272,619.62	2,172,308.25
81	272,621.07	2,172,308.28
82	272,621.24	2,172,307.68
83	272,623.15	2,172,304.62
84	272,628.70	2,172,296.44
85	272,631.65	2,172,292.44
86	272,634.74	2,172,291.21
87	272,639.14	2,172,289.27
88	272,645.47	2,172,286.31
89	272,643.66	2,172,288.82
90	272,636.74	2,172,296.36
91	272,630.62	2,172,304.56
92	272,626.87	2,172,310.56
93	272,627.85	2,172,311.43
94	272,627.94	2,172,311.47
95	272,627.90	2,172,311.53
96	272,634.93	2,172,314.32
97	272,647.36	2,172,321.32
98	272,648.70	2,172,316.64
99	272,652.35	2,172,308.08
100	272,657.82	2,172,300.72
101	272,665.17	2,172,295.05
102	272,672.65	2,172,289.76
103	272,679.91	2,172,284.43
104	272,686.28	2,172,278.06
105	272,692.22	2,172,270.81
106	272,694.00	2,172,268.67

Coordenadas UTM Z14N WGS84		
Polígono 4		
Vértice	X	Y
107	272,694.22	2,172,268.41
108	272,698.40	2,172,263.38
109	272,705.70	2,172,257.34
110	272,710.14	2,172,253.89
111	272,713.10	2,172,251.74
112	272,713.36	2,172,251.57
113	272,718.13	2,172,248.97
114	272,722.44	2,172,248.78
115	272,731.28	2,172,245.53
116	272,740.19	2,172,242.43
117	272,749.01	2,172,238.56
118	272,758.65	2,172,238.49
119	272,768.33	2,172,240.50
120	272,777.73	2,172,243.32
121	272,786.78	2,172,245.89
122	272,792.20	2,172,246.76
123	272,792.23	2,172,246.77
124	272,795.62	2,172,247.31
125	272,804.35	2,172,248.85
126	272,806.72	2,172,248.74
127	272,809.98	2,172,248.69
128	272,813.35	2,172,248.55
129	272,823.26	2,172,245.25
130	272,834.33	2,172,240.10
131	272,836.29	2,172,239.68
132	272,836.36	2,172,239.66
133	272,838.40	2,172,239.22
134	272,838.93	2,172,239.49
135	272,839.39	2,172,239.75
136	272,841.84	2,172,243.53
137	272,842.21	2,172,244.11
138	272,845.57	2,172,249.29
139	272,853.52	2,172,255.84
140	272,864.10	2,172,257.54
141	272,874.48	2,172,259.34
142	272,876.32	2,172,260.49

Coordenadas UTM Z14N WGS84		
Polígono 4		
Vértice	X	Y
143	272,882.99	2,172,264.63
144	272,883.29	2,172,265.35
145	272,884.36	2,172,265.09
146	272,885.91	2,172,266.17
147	272,886.03	2,172,266.69
148	272,913.41	2,172,261.45
149	272,913.53	2,172,254.92
150	272,903.22	2,172,250.65
151	272,899.95	2,172,249.21
152	272,892.73	2,172,246.34
153	272,883.39	2,172,242.60
154	272,874.46	2,172,238.11
155	272,864.39	2,172,235.94
156	272,857.09	2,172,228.70
157	272,848.63	2,172,223.54
158	272,847.48	2,172,222.85
159	272,847.03	2,172,222.35
160	272,841.80	2,172,219.80
161	272,831.44	2,172,217.87
162	272,822.20	2,172,213.94
163	272,819.92	2,172,212.85
164	272,813.34	2,172,209.35
165	272,805.60	2,172,205.56
166	272,804.70	2,172,205.12
167	272,803.87	2,172,204.71
168	272,794.20	2,172,200.41
169	272,784.03	2,172,197.32
170	272,773.45	2,172,196.38
171	272,762.87	2,172,195.83
172	272,752.25	2,172,196.35
173	272,741.68	2,172,198.00
174	272,731.53	2,172,201.45
175	272,722.16	2,172,206.42
176	272,713.24	2,172,211.33
177	272,710.26	2,172,212.99
178	272,709.89	2,172,213.19

Coordenadas UTM Z14N WGS84		
Polígono 4		
Vértice	X	Y
179	272,705.44	2,172,215.66
180	272,704.34	2,172,216.30
181	272,701.91	2,172,217.77
182	272,696.27	2,172,221.40
183	272,695.73	2,172,221.76
184	272,692.73	2,172,223.80
185	272,687.36	2,172,227.57
186	272,679.16	2,172,233.62
187	272,671.33	2,172,240.13
188	272,663.99	2,172,247.20
189	272,656.15	2,172,253.68
190	272,648.35	2,172,260.24
191	272,641.11	2,172,267.41
192	272,637.37	2,172,272.08
193	272,637.27	2,172,272.21
194	272,634.73	2,172,275.38
195	272,629.15	2,172,280.84
196	272,627.11	2,172,282.28
197	272,622.43	2,172,282.19
198	272,620.52	2,172,279.33
199	272,620.97	2,172,269.12
200	272,635.42	2,172,259.81
201	272,638.53	2,172,251.25
202	272,640.68	2,172,242.75
203	272,643.74	2,172,234.54
204	272,645.66	2,172,226.10
205	272,648.88	2,172,218.07
206	272,659.76	2,172,213.37
207	272,666.52	2,172,207.64
208	272,672.91	2,172,202.15
209	272,674.61	2,172,199.47
210	272,675.53	2,172,188.26
211	272,678.55	2,172,177.88
212	272,685.04	2,172,171.16
213	272,693.42	2,172,166.32
214	272,702.09	2,172,162.02

Coordenadas UTM Z14N WGS84		
Polígono 4		
Vértice	X	Y
215	272,710.77	2,172,159.06
216	272,719.33	2,172,155.89
217	272,727.56	2,172,151.53
218	272,736.28	2,172,148.19
219	272,745.45	2,172,146.72
220	272,754.81	2,172,147.24
221	272,764.01	2,172,149.02
222	272,772.98	2,172,150.51
223	272,781.62	2,172,153.68
224	272,789.26	2,172,155.76
225	272,789.60	2,172,155.85
226	272,792.27	2,172,156.58
227	272,799.31	2,172,158.64
228	272,802.98	2,172,145.46
229	272,804.09	2,172,145.73
230	272,809.98	2,172,147.54
231	272,806.77	2,172,167.85
232	272,817.26	2,172,164.96
233	272,825.69	2,172,163.29
234	272,826.46	2,172,163.07
235	272,831.87	2,172,161.88
236	272,836.12	2,172,163.27
237	272,843.59	2,172,168.44
238	272,853.76	2,172,173.20
239	272,862.92	2,172,179.15
240	272,872.83	2,172,183.83
241	272,883.29	2,172,187.18
242	272,894.12	2,172,189.42
243	272,905.19	2,172,190.27
244	272,911.41	2,172,190.08
245	272,912.75	2,172,190.32
246	272,913.72	2,172,196.54
247	272,916.30	2,172,206.12
248	272,918.78	2,172,215.71
249	272,921.48	2,172,225.24
250	272,923.74	2,172,233.00

Coordenadas UTM Z14N WGS84		
Polígono 4		
Vértice	X	Y
251	272,924.25	2,172,234.74
252	272,927.38	2,172,244.15
253	272,932.39	2,172,253.06
254	272,932.22	2,172,255.15
255	272,934.71	2,172,254.82
256	272,947.97	2,172,251.85
257	272,950.05	2,172,251.52
258	272,949.51	2,172,248.50
259	272,947.36	2,172,238.65
260	272,944.92	2,172,228.87
261	272,944.14	2,172,218.60
262	272,941.37	2,172,208.90
263	272,936.30	2,172,199.91
264	272,932.70	2,172,190.48
265	272,932.53	2,172,190.06
266	272,932.19	2,172,189.17
267	272,929.96	2,172,183.42
268	272,929.08	2,172,181.08
269	272,927.47	2,172,176.87
270	272,925.47	2,172,171.67
271	272,922.41	2,172,163.95
272	272,921.76	2,172,162.31
273	272,918.09	2,172,152.94
274	272,914.48	2,172,143.56
275	272,910.80	2,172,134.20
276	272,908.47	2,172,124.33
277	272,907.60	2,172,121.59
278	272,907.57	2,172,121.51
279	272,905.39	2,172,114.73
280	272,905.09	2,172,113.83
281	272,902.41	2,172,105.09
282	272,901.25	2,172,101.41
283	272,899.57	2,172,095.36
284	272,899.26	2,172,094.37
285	272,897.94	2,172,089.26
286	272,896.74	2,172,085.62

Coordenadas UTM Z14N WGS84		
Polígono 4		
Vértice	X	Y
287	272,894.32	2,172,075.68
288	272,892.35	2,172,065.51
289	272,889.51	2,172,055.69
290	272,889.38	2,172,055.36
291	272,889.07	2,172,054.58
292	272,885.76	2,172,046.26
293	272,884.52	2,172,043.59
294	272,883.04	2,172,040.05
295	272,881.62	2,172,037.01
296	272,877.45	2,172,028.30
297	272,877.23	2,172,027.88
298	272,872.93	2,172,018.70
299	272,870.24	2,172,019.86
300	272,869.46	2,172,019.26
301	272,854.54	2,172,006.56
302	272,851.42	2,172,000.40
303	272,846.43	2,171,990.83
304	272,844.90	2,171,987.65
305	272,841.66	2,171,980.97
306	272,841.36	2,171,980.33
307	272,840.68	2,171,978.88
308	272,836.56	2,171,970.07
309	272,830.04	2,171,952.15
310	272,827.73	2,171,942.18
311	272,826.57	2,171,935.01
312	272,826.11	2,171,929.59
313	272,827.64	2,171,914.39
314	272,829.09	2,171,910.79
315	272,833.99	2,171,898.63
316	272,834.80	2,171,896.62
317	272,842.70	2,171,880.29
318	272,852.99	2,171,865.91
319	272,849.45	2,171,858.77
320	272,850.34	2,171,857.07
321	272,850.86	2,171,856.18
322	272,851.40	2,171,855.29

Coordenadas UTM Z14N WGS84		
Polígono 4		
Vértice	X	Y
323	272,837.29	2,171,840.19
324	272,836.47	2,171,839.23
325	272,833.45	2,171,844.08
326	272,827.97	2,171,853.08
327	272,819.58	2,171,872.43
328	272,814.43	2,171,892.89
329	272,812.46	2,171,913.86
330	272,808.56	2,171,935.40
331	272,810.42	2,171,957.32
332	272,810.79	2,171,958.71
333	272,812.08	2,171,963.51
334	272,816.18	2,171,978.77
335	272,823.02	2,171,991.05
336	272,823.53	2,171,991.92
337	272,810.51	2,171,990.18
338	272,789.86	2,171,987.41
339	272,778.28	2,171,986.62
340	272,771.16	2,171,973.11
341	272,765.35	2,171,954.17
342	272,762.59	2,171,946.12
343	272,760.51	2,171,937.52
344	272,759.58	2,171,933.19
345	272,761.11	2,171,928.49
346	272,763.26	2,171,921.88
347	272,765.91	2,171,913.72
348	272,758.18	2,171,896.83
349	272,770.64	2,171,902.68
350	272,775.04	2,171,885.98
351	272,782.20	2,171,869.40
352	272,791.17	2,171,854.03
353	272,798.34	2,171,838.33
354	272,804.74	2,171,821.97
355	272,799.47	2,171,801.64
356	272,796.83	2,171,799.14
357	272,797.44	2,171,798.33
358	272,786.53	2,171,786.74

Coordenadas UTM Z14N WGS84		
Polígono 4		
Vértice	X	Y
359	272,783.81	2,171,783.85
360	272,780.85	2,171,782.44
361	272,779.02	2,171,783.63
362	272,763.71	2,171,799.00
363	272,751.59	2,171,816.62
364	272,741.73	2,171,835.60
365	272,735.42	2,171,856.32
366	272,733.64	2,171,864.80
367	272,732.98	2,171,867.94
368	272,730.78	2,171,878.46
369	272,730.39	2,171,884.60
370	272,733.06	2,171,899.35
371	272,736.53	2,171,919.43
372	272,737.67	2,171,926.75
373	272,737.77	2,171,927.36
374	272,739.68	2,171,939.61
375	272,744.01	2,171,959.56
376	272,750.30	2,171,979.00
377	272,752.67	2,171,986.08
378	272,748.14	2,171,986.11
379	272,727.45	2,171,989.05
380	272,716.21	2,171,990.93
381	272,713.79	2,171,991.50
382	272,707.79	2,171,980.24
383	272,705.28	2,171,960.49
384	272,697.75	2,171,941.92
385	272,692.71	2,171,922.72
386	272,689.80	2,171,908.09
387	272,687.11	2,171,891.19
388	272,686.88	2,171,889.48
389	272,685.55	2,171,879.72
390	272,685.43	2,171,878.66
391	272,688.86	2,171,874.70
392	272,691.60	2,171,871.53
393	272,697.90	2,171,864.24
394	272,701.81	2,171,847.09

Coordenadas UTM Z14N WGS84		
Polígono 4		
Vértice	X	Y
395	272,710.16	2,171,831.54
396	272,717.65	2,171,816.86
397	272,721.37	2,171,800.59
398	272,728.63	2,171,785.47
399	272,740.19	2,171,773.35
400	272,741.07	2,171,748.31
401	272,742.37	2,171,744.61
402	272,742.92	2,171,743.69
403	272,744.55	2,171,742.39
404	272,734.23	2,171,731.59
405	272,727.86	2,171,724.32
406	272,721.93	2,171,718.25
407	272,720.28	2,171,719.37
408	272,719.11	2,171,720.17
409	272,714.52	2,171,723.29
410	272,706.69	2,171,730.71
411	272,693.26	2,171,748.51
412	272,691.32	2,171,750.51
413	272,679.78	2,171,765.21
414	272,676.94	2,171,769.09
415	272,673.30	2,171,776.32
416	272,669.40	2,171,784.10
417	272,666.86	2,171,794.54
418	272,664.86	2,171,805.13
419	272,663.44	2,171,826.34
420	272,664.20	2,171,847.65
421	272,662.70	2,171,864.56
422	272,662.32	2,171,868.79
423	272,661.57	2,171,868.07
424	272,661.00	2,171,867.54
425	272,656.39	2,171,863.15
426	272,651.68	2,171,856.06
427	272,646.48	2,171,847.13
428	272,645.57	2,171,845.30
429	272,645.20	2,171,839.09
430	272,644.85	2,171,833.07

Coordenadas UTM Z14N WGS84		
Polígono 4		
Vértice	X	Y
431	272,644.47	2,171,826.55
432	272,636.85	2,171,809.42
433	272,630.93	2,171,791.41
434	272,628.85	2,171,772.56
435	272,631.37	2,171,760.85
436	272,634.84	2,171,755.37
437	272,647.73	2,171,746.28
438	272,650.95	2,171,745.58
439	272,661.17	2,171,736.71
440	272,664.72	2,171,726.66
441	272,667.39	2,171,719.69
442	272,675.64	2,171,702.50
443	272,679.27	2,171,696.43
444	272,685.91	2,171,685.06
445	272,689.88	2,171,679.44
446	272,695.54	2,171,676.21
447	272,687.23	2,171,661.58
448	272,683.02	2,171,661.06
449	272,683.21	2,171,660.90
450	272,679.69	2,171,652.57
451	272,657.90	2,171,657.86
452	272,637.18	2,171,662.83
453	272,616.73	2,171,668.25
454	272,596.39	2,171,675.33
455	272,577.30	2,171,685.91
456	272,569.90	2,171,691.50
457	272,560.63	2,171,700.87
458	272,551.81	2,171,722.26
459	272,540.14	2,171,742.28
460	272,535.62	2,171,747.87
461	272,534.66	2,171,746.49
462	272,525.11	2,171,729.16
463	272,524.68	2,171,728.26
464	272,522.15	2,171,722.88
465	272,521.12	2,171,720.59
466	272,513.28	2,171,702.26

Coordenadas UTM Z14N WGS84		
Polígono 4		
Vértice	X	Y
467	272,512.25	2,171,699.95
468	272,510.20	2,171,694.89
469	272,509.32	2,171,691.36
470	272,509.09	2,171,687.14
471	272,509.06	2,171,686.55
472	272,508.61	2,171,677.89
473	272,509.23	2,171,674.32
474	272,511.37	2,171,669.10
475	272,511.47	2,171,668.85
476	272,514.36	2,171,661.81
477	272,516.66	2,171,658.41
478	272,520.37	2,171,654.32
479	272,525.95	2,171,649.58
480	272,531.82	2,171,645.21
481	272,537.96	2,171,641.23
482	272,544.60	2,171,637.60
483	272,546.20	2,171,636.90
484	272,562.71	2,171,634.83
485	272,569.30	2,171,646.40
486	272,602.69	2,171,623.12
487	272,606.31	2,171,620.24
488	272,616.76	2,171,611.94
489	272,619.50	2,171,610.24
490	272,641.65	2,171,608.18
491	272,648.37	2,171,603.84
492	272,647.35	2,171,602.08
493	272,651.87	2,171,599.34
494	272,641.49	2,171,582.25
495	272,638.49	2,171,584.07
496	272,636.60	2,171,584.45
497	272,629.77	2,171,588.62
498	272,618.80	2,171,595.19
499	272,618.57	2,171,595.33
500	272,612.61	2,171,598.90
501	272,609.84	2,171,600.55
502	272,595.78	2,171,608.21

Coordenadas UTM Z14N WGS84		
Polígono 4		
Vértice	X	Y
503	272,577.99	2,171,614.71
504	272,577.79	2,171,614.75
505	272,563.29	2,171,616.65
506	272,558.26	2,171,617.32
507	272,536.39	2,171,621.85
508	272,528.89	2,171,626.14
509	272,519.22	2,171,635.69
510	272,510.15	2,171,643.10
511	272,502.97	2,171,651.63
512	272,494.05	2,171,673.66
513	272,492.22	2,171,698.27
514	272,495.65	2,171,708.20
515	272,496.24	2,171,709.67
516	272,499.26	2,171,717.65
517	272,499.60	2,171,718.54
518	272,506.77	2,171,737.76
519	272,514.80	2,171,756.68
520	272,517.60	2,171,762.53
521	272,523.93	2,171,775.10
522	272,533.45	2,171,792.31
523	272,533.42	2,171,792.35
524	272,536.81	2,171,806.10
525	272,536.82	2,171,806.39
526	272,537.83	2,171,815.49
527	272,538.69	2,171,820.77
528	272,539.99	2,171,827.63
529	272,543.51	2,171,842.18
530	272,538.48	2,171,841.42
531	272,535.52	2,171,857.87
532	272,534.14	2,171,861.64
533	272,528.92	2,171,874.43
534	272,524.26	2,171,884.07
535	272,523.68	2,171,885.29
536	272,521.15	2,171,890.54
537	272,511.97	2,171,905.87
538	272,501.40	2,171,920.27

Coordenadas UTM Z14N WGS84		
Polígono 4		
Vértice	X	Y
539	272,489.74	2,171,933.83
540	272,486.11	2,171,937.48
541	272,475.34	2,171,947.13
542	272,460.23	2,171,963.88
543	272,447.74	2,171,982.64
544	272,440.41	2,171,997.50
545	272,436.90	2,172,002.91
546	272,432.99	2,172,026.88
547	272,434.48	2,172,050.38
548	272,434.88	2,172,052.62
549	272,435.46	2,172,068.56
550	272,430.77	2,172,085.62
551	272,425.52	2,172,095.59
552	272,422.33	2,172,101.33
553	272,414.08	2,172,119.60
554	272,412.92	2,172,135.90
555	272,410.75	2,172,139.97
556	272,422.27	2,172,160.92
557	272,433.20	2,172,140.35
558	272,436.95	2,172,133.29
559	272,437.16	2,172,132.81
560	272,437.28	2,172,132.30
561	272,437.30	2,172,131.77
562	272,437.24	2,172,131.26
563	272,437.09	2,172,130.76
564	272,436.85	2,172,130.29
565	272,436.53	2,172,129.87
566	272,436.15	2,172,129.52
567	272,435.71	2,172,129.23
568	272,431.30	2,172,126.88
569	272,436.46	2,172,117.17
570	272,443.33	2,172,104.25
571	272,446.57	2,172,096.72
572	272,449.26	2,172,088.98
573	272,451.38	2,172,081.07
574	272,452.23	2,172,078.99

Coordenadas UTM Z14N WGS84		
Polígono 4		
Vértice	X	Y
575	272,457.31	2,172,067.04
576	272,463.36	2,172,053.81
577	272,465.12	2,172,050.12
578	272,467.94	2,172,044.48
579	272,532.92	2,171,959.16
580	272,538.18	2,171,953.99
581	272,538.23	2,171,953.94
582	272,539.27	2,171,952.92
583	272,540.75	2,171,929.06
584	272,543.32	2,171,926.57
585	272,554.87	2,171,908.38
586	272,562.60	2,171,891.93
587	272,571.60	2,171,907.63
588	272,572.43	2,171,908.80
589	272,578.31	2,171,920.58
590	272,582.68	2,171,935.99
591	272,583.47	2,171,952.20
592	272,582.33	2,171,960.75
593	272,582.32	2,171,960.83
594	272,581.86	2,171,964.20
595	272,580.98	2,171,968.46
596	272,578.85	2,171,976.79
597	272,577.89	2,171,979.66
598	272,571.65	2,171,991.83
599	272,567.64	2,171,996.07
600	272,566.06	2,171,997.61
601	272,555.72	2,172,016.35
602	272,546.03	2,172,029.37
603	272,545.92	2,172,029.52
604	272,543.44	2,172,032.85
605	272,531.54	2,172,049.60
606	272,521.92	2,172,067.76
607	272,521.21	2,172,068.68
608	272,517.66	2,172,074.98
609	272,511.79	2,172,085.53
610	272,504.92	2,172,101.25

Coordenadas UTM Z14N WGS84		
Polígono 4		
Vértice	X	Y
611	272,504.64	2,172,101.88
612	272,503.63	2,172,104.20
613	272,498.11	2,172,123.84
614	272,490.81	2,172,142.83
615	272,484.07	2,172,162.10
616	272,480.47	2,172,165.07
617	272,479.61	2,172,168.84
618	272,479.21	2,172,170.60
619	272,478.41	2,172,174.11
620	272,479.45	2,172,181.98
621	272,478.32	2,172,187.90
622	272,475.23	2,172,200.35
623	272,469.26	2,172,215.06
624	272,468.38	2,172,216.25
625	272,463.31	2,172,227.11
626	272,460.02	2,172,231.57
627	272,459.58	2,172,232.16
628	272,458.25	2,172,233.96
629	272,462.62	2,172,242.49
630	272,468.81	2,172,253.32
631	272,470.11	2,172,251.57
632	272,474.87	2,172,245.13
633	272,476.72	2,172,246.03
634	272,477.29	2,172,241.85
635	272,478.39	2,172,240.35
636	272,486.88	2,172,228.86
637	272,480.62	2,172,224.23
638	272,484.57	2,172,216.93
639	272,487.90	2,172,209.34
640	272,490.59	2,172,201.49
641	272,492.63	2,172,193.45
642	272,493.16	2,172,190.73
643	272,496.73	2,172,173.94
644	272,498.28	2,172,167.80
645	272,500.57	2,172,166.27
646	272,514.78	2,172,150.03

Coordenadas UTM Z14N WGS84		
Polígono 4		
Vértice	X	Y
647	272,527.08	2,172,140.17
648	272,527.47	2,172,139.86
649	272,532.46	2,172,135.85
650	272,545.43	2,172,122.95

Coordenadas UTM Z14N WGS84		
Polígono interno 4A (no CUSTF)		
Vértice	X	Y
1	272,652.55	2,172,141.88
2	272,655.01	2,172,135.58
3	272,655.58	2,172,134.26
4	272,656.19	2,172,132.93
5	272,674.94	2,172,134.19
6	272,679.66	2,172,127.49
7	272,680.70	2,172,117.21
8	272,680.77	2,172,116.80
9	272,680.85	2,172,116.32
10	272,682.56	2,172,106.37
11	272,687.08	2,172,097.21
12	272,695.68	2,172,093.00
13	272,704.18	2,172,089.01
14	272,712.65	2,172,085.15
15	272,721.84	2,172,083.30
16	272,731.35	2,172,083.47
17	272,739.60	2,172,083.89
18	272,748.88	2,172,083.60
19	272,758.12	2,172,083.54
20	272,767.31	2,172,086.07
21	272,776.31	2,172,088.31
22	272,785.77	2,172,084.41
23	272,796.17	2,172,081.49
24	272,808.02	2,172,077.37
25	272,818.76	2,172,073.35
26	272,829.40	2,172,070.17
27	272,839.35	2,172,065.12
28	272,847.95	2,172,057.99

Coordenadas UTM Z14N WGS84		
Polígono interno 4A (no CUSTF)		
Vértice	X	Y
29	272,856.09	2,172,051.05
30	272,860.49	2,172,051.13
31	272,861.74	2,172,051.70
32	272,862.91	2,172,052.49
33	272,863.93	2,172,053.46
34	272,864.53	2,172,054.78
35	272,863.93	2,172,056.28
36	272,868.08	2,172,065.31
37	272,872.23	2,172,074.35
38	272,876.22	2,172,083.45
39	272,879.96	2,172,092.67
40	272,881.39	2,172,096.15
41	272,882.76	2,172,098.17
42	272,880.56	2,172,100.88
43	272,873.60	2,172,105.70
44	272,865.79	2,172,110.86
45	272,857.62	2,172,115.41
46	272,849.05	2,172,119.12
47	272,840.29	2,172,122.30
48	272,835.51	2,172,123.70
49	272,831.32	2,172,124.80
50	272,822.24	2,172,126.88
51	272,814.13	2,172,128.47
52	272,813.05	2,172,128.72
53	272,803.69	2,172,130.10
54	272,800.01	2,172,130.27
55	272,794.21	2,172,130.17
56	272,784.57	2,172,129.11
57	272,774.21	2,172,127.70
58	272,763.77	2,172,128.20
59	272,753.34	2,172,128.37
60	272,742.95	2,172,129.37
61	272,732.64	2,172,131.06
62	272,722.42	2,172,133.32
63	272,712.58	2,172,136.86
64	272,702.93	2,172,140.85

Coordenadas UTM Z14N WGS84		
Polígono interno 4A (no CUSTF)		
Vértice	X	Y
65	272,693.42	2,172,145.20
66	272,683.88	2,172,148.98
67	272,674.56	2,172,153.27
68	272,663.67	2,172,156.11
69	272,654.71	2,172,162.41
70	272,649.34	2,172,172.69
71	272,646.74	2,172,176.68
72	272,641.79	2,172,176.93
73	272,642.20	2,172,168.98
74	272,642.83	2,172,167.62
75	272,643.23	2,172,166.62
76	272,645.88	2,172,160.06
77	272,646.15	2,172,159.34
78	272,649.15	2,172,150.97
79	272,651.84	2,172,143.73
80	272,652.55	2,172,141.88

Coordenadas UTM Z14N WGS84		
Polígono interno 4B (no CUSTF)		
Vértice	X	Y
1	272,597.34	2,172,107.04
2	272,606.75	2,172,090.59
3	272,615.06	2,172,072.90
4	272,632.34	2,172,062.87
5	272,638.53	2,172,055.25
6	272,641.89	2,172,051.12
7	272,644.41	2,172,048.02
8	272,651.35	2,172,042.59
9	272,651.37	2,172,042.58
10	272,659.46	2,172,036.26
11	272,677.11	2,172,028.81
12	272,693.81	2,172,019.73
13	272,706.67	2,172,011.91
14	272,708.37	2,172,011.37
15	272,718.67	2,172,008.71
16	272,719.38	2,172,008.55

Coordenadas UTM Z14N WGS84		
Polígono interno 4B (no CUSTF)		
Vértice	X	Y
17	272,729.21	2,172,007.07
18	272,729.84	2,172,007.03
19	272,749.56	2,172,009.30
20	272,768.81	2,172,010.10
21	272,787.95	2,172,011.19
22	272,806.97	2,172,013.47
23	272,825.84	2,172,016.78
24	272,840.80	2,172,020.21
25	272,841.00	2,172,018.65
26	272,849.03	2,172,029.26
27	272,850.69	2,172,029.19
28	272,850.60	2,172,031.09
29	272,848.32	2,172,031.08
30	272,846.25	2,172,035.63
31	272,843.58	2,172,039.95
32	272,837.65	2,172,047.07
33	272,831.03	2,172,052.59
34	272,823.69	2,172,057.25
35	272,815.47	2,172,060.20
36	272,811.56	2,172,060.74
37	272,804.78	2,172,061.32
38	272,798.13	2,172,061.07
39	272,788.30	2,172,059.28
40	272,777.98	2,172,058.12
41	272,767.59	2,172,057.63
42	272,757.19	2,172,058.16
43	272,746.86	2,172,059.25
44	272,736.67	2,172,061.26
45	272,726.01	2,172,063.64
46	272,715.87	2,172,066.54
47	272,705.93	2,172,070.16
48	272,696.35	2,172,074.68
49	272,687.06	2,172,079.82
50	272,678.11	2,172,085.60
51	272,670.24	2,172,092.79
52	272,662.83	2,172,100.41

Coordenadas UTM Z14N WGS84		
Polígono interno 4B (no CUSTF)		
Vértice	X	Y
53	272,655.14	2,172,107.83
54	272,644.35	2,172,113.41
55	272,635.43	2,172,118.03
56	272,630.94	2,172,122.91
57	272,629.72	2,172,124.10
58	272,622.99	2,172,129.34
59	272,619.63	2,172,131.39
60	272,615.43	2,172,133.42
61	272,607.86	2,172,138.91
62	272,599.14	2,172,141.53
63	272,594.91	2,172,140.55
64	272,593.51	2,172,139.11
65	272,591.53	2,172,139.78
66	272,590.79	2,172,138.49
67	272,590.76	2,172,138.42
68	272,591.04	2,172,137.76
69	272,588.68	2,172,125.51
70	272,590.21	2,172,123.54
71	272,597.34	2,172,107.04

Coordenadas UTM Z14N WGS84		
Polígono interno 4C (no CUSTF)		
Vértice	X	Y
1	272,573.47	2,172,137.76
2	272,573.00	2,172,140.77
3	272,570.32	2,172,142.83
4	272,570.20	2,172,142.92
5	272,566.09	2,172,146.09
6	272,561.93	2,172,145.63
7	272,557.18	2,172,137.76
8	272,557.24	2,172,137.10
9	272,563.45	2,172,130.23
10	272,566.09	2,172,129.97
11	272,571.54	2,172,132.70
12	272,573.47	2,172,137.76

Coordenadas UTM Z14N WGS84		
Polígono interno 4D (no CUSTF)		
Vértice	X	Y
1	272,865.38	2,172,130.34
2	272,874.69	2,172,125.11
3	272,883.42	2,172,118.97
4	272,888.02	2,172,117.42
5	272,890.39	2,172,118.52
6	272,891.71	2,172,119.14
7	272,891.82	2,172,119.21
8	272,891.28	2,172,119.65
9	272,889.86	2,172,120.82
10	272,893.52	2,172,130.05
11	272,896.97	2,172,139.37
12	272,900.28	2,172,148.73
13	272,903.43	2,172,158.15
14	272,906.35	2,172,167.64
15	272,906.84	2,172,169.31
16	272,908.03	2,172,170.56
17	272,905.29	2,172,172.17
18	272,904.55	2,172,172.60
19	272,895.69	2,172,172.40
20	272,886.93	2,172,171.09
21	272,878.38	2,172,168.71
22	272,870.20	2,172,165.23
23	272,862.63	2,172,160.56
24	272,855.54	2,172,154.97
25	272,847.18	2,172,148.16
26	272,842.56	2,172,145.00
27	272,840.31	2,172,140.38
28	272,845.78	2,172,138.77
29	272,855.76	2,172,134.96
30	272,865.38	2,172,130.34

Coordenadas UTM Z14N WGS84		
Polígono interno 4E (no CUSTF)		
Vértice	X	Y
1	272,571.77	2,172,101.47
2	272,571.10	2,172,102.30

Coordenadas UTM Z14N WGS84		
Polígono interno 4E (no CUSTF)		
Vértice	X	Y
3	272,570.50	2,172,097.19
4	272,573.58	2,172,078.22
5	272,576.62	2,172,059.32
6	272,577.31	2,172,039.61
7	272,583.30	2,172,021.11
8	272,589.81	2,172,012.71
9	272,593.73	2,172,006.45
10	272,603.83	2,171,996.95
11	272,605.84	2,171,995.54
12	272,621.27	2,171,984.33
13	272,637.40	2,171,974.12
14	272,654.07	2,171,964.73
15	272,671.59	2,171,956.99
16	272,679.69	2,171,957.37
17	272,681.72	2,171,966.16
18	272,688.24	2,171,985.47
19	272,690.01	2,171,998.49
20	272,686.07	2,171,999.75
21	272,666.63	2,172,008.31
22	272,650.11	2,172,021.82
23	272,633.73	2,172,034.76
24	272,618.65	2,172,049.06
25	272,600.97	2,172,061.33
26	272,586.57	2,172,077.23
27	272,576.19	2,172,095.98
28	272,573.20	2,172,099.69
29	272,571.77	2,172,101.47

Coordenadas UTM Z14N WGS84		
Polígono interno 4F (no CUSTF)		
Vértice	X	Y
1	272,547.38	2,172,074.75
2	272,546.92	2,172,091.86
3	272,546.06	2,172,088.71
4	272,545.22	2,172,084.36
5	272,545.19	2,172,084.24

Coordenadas UTM Z14N WGS84		
Polígono interno 4F (no CUSTF)		
Vértice	X	Y
6	272,544.51	2,172,080.72
7	272,544.28	2,172,079.44
8	272,543.81	2,172,057.25
9	272,550.87	2,172,049.98
10	272,550.44	2,172,053.88
11	272,547.38	2,172,074.75

Coordenadas UTM Z14N WGS84		
Polígono interno 4G (no CUSTF)		
Vértice	X	Y
1	272,660.85	2,171,682.58
2	272,665.56	2,171,678.05
3	272,669.92	2,171,673.32
4	272,670.26	2,171,673.77
5	272,670.53	2,171,674.29
6	272,670.71	2,171,674.85
7	272,670.80	2,171,675.43
8	272,670.79	2,171,676.02
9	272,670.68	2,171,676.59
10	272,670.56	2,171,676.89
11	272,660.85	2,171,682.58
12	272,660.07	2,171,683.33
13	272,643.65	2,171,696.40
14	272,637.36	2,171,702.15
15	272,628.10	2,171,710.88
16	272,619.98	2,171,725.57
17	272,618.27	2,171,730.27
18	272,609.84	2,171,751.83
19	272,608.36	2,171,760.74
20	272,604.67	2,171,774.06
21	272,606.77	2,171,795.55
22	272,612.46	2,171,816.36
23	272,622.87	2,171,835.31
24	272,623.99	2,171,842.61
25	272,624.02	2,171,842.78
26	272,626.27	2,171,857.41

Coordenadas UTM Z14N WGS84		
Polígono interno 4G (no CUSTF)		
Vértice	X	Y
27	272,634.88	2,171,877.89
28	272,648.66	2,171,895.20
29	272,665.32	2,171,908.11
30	272,666.08	2,171,899.89
31	272,666.32	2,171,906.88
32	272,670.58	2,171,920.71
33	272,661.82	2,171,931.16
34	272,640.70	2,171,936.18
35	272,619.90	2,171,943.13
36	272,615.08	2,171,944.27
37	272,615.37	2,171,932.98
38	272,611.21	2,171,910.46
39	272,601.56	2,171,890.33
40	272,600.80	2,171,889.33
41	272,591.03	2,171,873.07
42	272,588.99	2,171,868.64
43	272,582.90	2,171,855.91
44	272,576.33	2,171,838.11
45	272,573.58	2,171,828.26
46	272,573.52	2,171,828.07
47	272,571.23	2,171,819.84
48	272,569.79	2,171,813.85
49	272,568.75	2,171,809.25
50	272,567.12	2,171,801.33
51	272,567.01	2,171,800.74
52	272,559.60	2,171,784.70
53	272,563.51	2,171,782.90
54	272,557.62	2,171,764.81
55	272,573.05	2,171,758.09
56	272,575.32	2,171,749.58
57	272,582.63	2,171,737.39
58	272,591.55	2,171,727.35
59	272,598.33	2,171,722.65
60	272,604.55	2,171,719.87
61	272,620.31	2,171,716.61
62	272,631.63	2,171,706.23

Coordenadas UTM Z14N WGS84		
Polígono interno 4G (no CUSTF)		
Vértice	X	Y
63	272,644.27	2,171,694.11
64	272,659.72	2,171,683.24
65	272,660.85	2,171,682.58

Coordenadas UTM Z14N WGS84		
Polígono interno 4H (no CUSTF)		
Vértice	X	Y
1	272,452.48	2,172,052.04
2	272,452.33	2,172,052.05
3	272,451.82	2,172,050.17
4	272,456.24	2,172,036.27
5	272,456.25	2,172,036.26
6	272,457.64	2,172,031.89
7	272,464.86	2,172,015.18
8	272,466.90	2,172,010.93
9	272,472.17	2,171,997.85
10	272,483.39	2,171,982.46
11	272,497.15	2,171,969.37
12	272,503.59	2,171,964.57
13	272,489.81	2,171,987.42
14	272,489.72	2,171,987.57
15	272,454.99	2,172,045.16
16	272,454.50	2,172,046.53
17	272,453.35	2,172,049.65
18	272,452.48	2,172,052.04

Coordenadas UTM Z14N WGS84		
Polígono interno 4I (no CUSTF)		
Vértice	X	Y
1	272,700.29	2,171,764.96
2	272,710.70	2,171,757.81
3	272,709.74	2,171,760.89
4	272,709.00	2,171,763.30
5	272,709.28	2,171,766.60
6	272,709.11	2,171,767.30

Coordenadas UTM Z14N WGS84		
Polígono interno 4I (no CUSTF)		
Vértice	X	Y
7	272,708.48	2,171,768.09
8	272,702.24	2,171,777.07
9	272,696.65	2,171,786.46
10	272,691.71	2,171,796.22
11	272,687.46	2,171,806.30
12	272,686.63	2,171,808.73
13	272,686.17	2,171,809.29
14	272,680.81	2,171,825.81
15	272,680.76	2,171,825.97
16	272,680.61	2,171,826.44
17	272,680.28	2,171,831.42
18	272,679.02	2,171,837.94
19	272,677.68	2,171,848.80
20	272,677.63	2,171,849.13
21	272,677.51	2,171,849.44
22	272,677.35	2,171,849.74
23	272,677.14	2,171,850.00
24	272,676.90	2,171,850.22
25	272,676.61	2,171,850.40
26	272,676.30	2,171,850.53
27	272,675.98	2,171,850.60
28	272,675.65	2,171,850.62
29	272,675.31	2,171,850.59
30	272,674.99	2,171,850.50
31	272,674.69	2,171,850.35
32	272,674.42	2,171,850.16
33	272,674.18	2,171,849.93
34	272,674.01	2,171,849.70
35	272,673.65	2,171,843.82
36	272,674.57	2,171,822.71
37	272,679.16	2,171,801.88
38	272,687.26	2,171,782.01
39	272,700.29	2,171,764.96

Coordenadas UTM Z14N WGS84		
Polígono interno 4J (no CUSTF)		
Vértice	X	Y
1	272,725.22	2,171,735.40
2	272,725.76	2,171,735.33
3	272,726.31	2,171,735.34
4	272,726.85	2,171,735.44
5	272,727.36	2,171,735.62
6	272,727.85	2,171,735.89
7	272,728.28	2,171,736.22
8	272,728.66	2,171,736.62
9	272,729.01	2,171,736.98
10	272,724.06	2,171,737.82
11	272,723.11	2,171,738.35
12	272,723.94	2,171,735.94
13	272,724.20	2,171,735.79
14	272,724.69	2,171,735.55
15	272,725.22	2,171,735.40

Coordenadas UTM Z14N WGS84		
Polígono interno 4K (no CUSTF)		
Vértice	X	Y
1	272,751.81	2,171,839.08
2	272,759.51	2,171,833.14
3	272,756.90	2,171,840.57
4	272,752.67	2,171,861.01
5	272,749.94	2,171,881.43
6	272,749.62	2,171,885.94
7	272,746.55	2,171,882.27
8	272,745.98	2,171,877.12
9	272,746.15	2,171,857.64
10	272,748.66	2,171,849.42
11	272,748.96	2,171,848.44
12	272,751.81	2,171,839.08

Coordenadas UTM Z14N WGS84		
Polígono interno 4L (no CUSTF)		
Vértice	X	Y
1	272,773.00	2,171,807.69
2	272,777.93	2,171,803.46
3	272,777.26	2,171,804.40
4	272,774.79	2,171,807.41
5	272,774.40	2,171,807.89
6	272,772.26	2,171,810.51
7	272,773.00	2,171,807.69

Coordenadas UTM Z14N WGS84		
Polígono interno 4M (no CUSTF)		
Vértice	X	Y
1	272,684.73	2,172,240.97
2	272,698.24	2,172,231.96
3	272,702.54	2,172,232.16
4	272,704.26	2,172,234.77
5	272,704.12	2,172,241.55
6	272,689.32	2,172,248.30
7	272,674.36	2,172,256.75
8	272,678.48	2,172,248.96
9	272,684.73	2,172,240.97

Coordenadas UTM Z14N WGS84		
Polígono interno 4N (no CUSTF)		
Vértice	X	Y
1	272,794.57	2,172,217.68
2	272,797.50	2,172,217.79
3	272,807.70	2,172,220.73
4	272,810.35	2,172,221.65
5	272,813.79	2,172,220.70
6	272,813.86	2,172,221.00
7	272,813.88	2,172,221.58
8	272,813.82	2,172,222.16
9	272,813.67	2,172,222.67
10	272,806.14	2,172,221.20
11	272,797.21	2,172,218.97

Coordenadas UTM Z14N WGS84		
Polígono interno 4Ñ (no CUSTF)		
Vértice	X	Y
1	272,794.57	2,172,217.68
2	272,792.48	2,172,217.59
3	272,787.02	2,172,217.38
4	272,776.58	2,172,218.43
5	272,766.34	2,172,220.87
6	272,756.32	2,172,223.71
7	272,746.30	2,172,225.93
8	272,736.39	2,172,228.53
9	272,726.73	2,172,231.87
10	272,717.21	2,172,235.57
11	272,710.42	2,172,230.24
12	272,709.79	2,172,225.20
13	272,710.76	2,172,224.42
14	272,718.06	2,172,219.82
15	272,726.42	2,172,214.54
16	272,735.08	2,172,210.30
17	272,744.20	2,172,207.32
18	272,753.57	2,172,205.24
19	272,763.22	2,172,207.45
20	272,772.38	2,172,208.68
21	272,781.24	2,172,210.85
22	272,789.33	2,172,215.10
23	272,794.57	2,172,217.68

Coordenadas UTM Z14N WGS84		
Polígono interno 4O (no CUSTF)		
Vértice	X	Y
1	272,522.07	2,172,319.96
2	272,518.21	2,172,322.17
3	272,510.37	2,172,319.88
4	272,514.80	2,172,308.42
5	272,517.90	2,172,306.10
6	272,528.43	2,172,294.26
7	272,531.91	2,172,290.72
8	272,533.91	2,172,287.68
9	272,537.79	2,172,282.65

Coordenadas UTM Z14N WGS84		
Polígono interno 4O (no CUSTF)		
Vértice	X	Y
10	272,538.01	2,172,282.39
11	272,538.28	2,172,282.16
12	272,538.46	2,172,282.06
13	272,538.08	2,172,286.87
14	272,534.08	2,172,299.84
15	272,533.18	2,172,302.75
16	272,532.32	2,172,305.56
17	272,528.06	2,172,313.66
18	272,522.07	2,172,319.96

III.2.5 Coordenadas UTM del Polígono No. 5 de CUSTF.

Coordenadas UTM Z14N WGS84		
Polígono 5		
Vértice	X	Y
1	273,254.36	2,172,192.60
2	273,255.23	2,172,189.34
3	273,255.73	2,172,187.49
4	273,256.21	2,172,185.69
5	273,258.90	2,172,175.33
6	273,262.68	2,172,165.76
7	273,265.07	2,172,160.66
8	273,265.85	2,172,158.19
9	273,266.49	2,172,156.20
10	273,271.75	2,172,147.67
11	273,276.13	2,172,141.49
12	273,280.71	2,172,134.46
13	273,281.31	2,172,133.90
14	273,282.45	2,172,133.11
15	273,285.46	2,172,131.29
16	273,285.99	2,172,131.21
17	273,294.57	2,172,125.63
18	273,304.63	2,172,122.07
19	273,313.66	2,172,116.82

Coordenadas UTM Z14N WGS84		
Polígono 5		
Vértice	X	Y
20	273,316.18	2,172,114.50
21	273,323.24	2,172,107.90
22	273,328.76	2,172,102.57
23	273,333.33	2,172,097.45
24	273,340.24	2,172,104.62
25	273,340.88	2,172,103.74
26	273,349.20	2,172,094.75
27	273,348.68	2,172,092.56
28	273,349.45	2,172,089.89
29	273,353.32	2,172,084.02
30	273,344.80	2,172,063.52
31	273,339.24	2,172,070.06
32	273,338.54	2,172,070.03
33	273,336.67	2,172,071.85
34	273,331.85	2,172,077.12
35	273,325.02	2,172,084.06
36	273,323.99	2,172,085.07
37	273,322.68	2,172,086.32
38	273,317.99	2,172,090.80
39	273,310.76	2,172,097.34
40	273,303.31	2,172,103.63
41	273,295.24	2,172,109.11
42	273,286.82	2,172,114.01
43	273,278.42	2,172,118.87
44	273,274.12	2,172,121.11
45	273,269.81	2,172,123.32
46	273,264.87	2,172,126.15
47	273,261.41	2,172,128.12
48	273,252.89	2,172,132.74
49	273,245.48	2,172,136.86
50	273,244.40	2,172,137.54
51	273,235.23	2,172,140.80
52	273,225.90	2,172,143.50
53	273,216.91	2,172,147.32
54	273,210.52	2,172,149.05
55	273,207.41	2,172,149.40

Coordenadas UTM Z14N WGS84		
Polígono 5		
Vértice	X	Y
56	273,207.26	2,172,149.41
57	273,197.29	2,172,147.97
58	273,189.54	2,172,149.61
59	273,186.25	2,172,148.25
60	273,181.98	2,172,145.65
61	273,182.33	2,172,145.90
62	273,212.89	2,172,167.18
63	273,212.54	2,172,166.89
64	273,212.46	2,172,166.81
65	273,215.62	2,172,169.01
66	273,215.67	2,172,168.62
67	273,223.28	2,172,169.17
68	273,224.41	2,172,168.71
69	273,233.12	2,172,165.19
70	273,241.02	2,172,162.58
71	273,240.98	2,172,162.62
72	273,234.16	2,172,170.04
73	273,231.32	2,172,172.22
74	273,231.21	2,172,172.30
75	273,228.71	2,172,174.41
76	273,225.22	2,172,175.69
77	273,230.21	2,172,179.17
78	273,230.82	2,172,179.59
79	273,230.68	2,172,179.54
80	273,230.31	2,172,179.32
81	273,247.48	2,172,191.28
82	273,246.85	2,172,190.75
83	273,247.53	2,172,191.23
84	273,254.04	2,172,195.76
85	273,254.19	2,172,194.22
86	273,254.24	2,172,193.73
87	273,254.36	2,172,192.60

III.2.6 Coordenadas UTM del Polígono No. 6 de CUSTF

Coordenadas UTM Z14N WGS84		
Polígono 6		
Vértice	X	Y
1	273,225.67	2,172,087.29
2	273,235.78	2,172,084.34
3	273,245.05	2,172,079.48
4	273,253.94	2,172,073.98
5	273,263.46	2,172,069.35
6	273,267.18	2,172,066.99
7	273,267.54	2,172,066.77
8	273,272.39	2,172,063.69
9	273,279.20	2,172,055.43
10	273,287.76	2,172,049.23
11	273,295.52	2,172,042.08
12	273,301.80	2,172,033.58
13	273,308.68	2,172,025.61
14	273,315.71	2,172,017.66
15	273,317.66	2,172,014.52
16	273,318.58	2,172,012.81
17	273,321.23	2,172,008.64
18	273,321.72	2,172,007.97
19	273,319.22	2,172,002.04
20	273,309.18	2,171,977.90
21	273,305.37	2,171,985.68
22	273,301.28	2,171,993.10
23	273,295.54	2,171,991.17
24	273,294.62	2,171,992.55
25	273,292.47	2,171,996.16
26	273,297.00	2,172,000.08
27	273,296.64	2,172,000.66
28	273,300.96	2,172,005.00
29	273,299.74	2,172,006.85
30	273,294.29	2,172,014.75
31	273,288.61	2,172,022.51
32	273,281.79	2,172,029.30
33	273,274.79	2,172,035.84
34	273,267.65	2,172,042.20

Coordenadas UTM Z14N WGS84		
Polígono 6		
Vértice	X	Y
35	273,260.51	2,172,048.58
36	273,252.89	2,172,054.39
37	273,245.12	2,172,060.02
38	273,237.09	2,172,065.33
39	273,228.66	2,172,069.97
40	273,219.62	2,172,073.33
41	273,210.45	2,172,076.19
42	273,201.62	2,172,079.95
43	273,192.77	2,172,083.70
44	273,183.23	2,172,085.63
45	273,173.45	2,172,086.06
46	273,163.70	2,172,086.04
47	273,153.97	2,172,085.15
48	273,147.22	2,172,083.57
49	273,144.34	2,172,083.33
50	273,142.13	2,172,083.21
51	273,134.89	2,172,082.37
52	273,133.98	2,172,091.95
53	273,151.66	2,172,103.00
54	273,154.81	2,172,107.01
55	273,158.41	2,172,110.72
56	273,158.63	2,172,110.95
57	273,161.83	2,172,114.25
58	273,168.85	2,172,120.60
59	273,175.66	2,172,116.57
60	273,175.87	2,172,116.44
61	273,178.28	2,172,115.01
62	273,188.30	2,172,110.03
63	273,197.34	2,172,102.05
64	273,206.41	2,172,095.10
65	273,215.70	2,172,090.26
66	273,225.67	2,172,087.29

III.2.7 Coordenadas UTM del Polígono No. 7 de CUSTF

Coordenadas UTM Z14N WGS84		
Polígono 7		
Vértice	X	Y
1	273,178.52	2,172,036.02
2	273,189.94	2,172,031.10
3	273,198.50	2,172,023.76
4	273,207.94	2,172,019.18
5	273,219.03	2,172,017.05
6	273,227.00	2,172,009.72
7	273,233.69	2,172,001.19
8	273,242.13	2,171,994.76
9	273,249.55	2,171,987.15
10	273,253.61	2,171,979.33
11	273,254.13	2,171,978.31
12	273,254.48	2,171,977.64
13	273,260.32	2,171,968.91
14	273,267.49	2,171,960.69
15	273,275.85	2,171,952.43
16	273,280.85	2,171,943.85
17	273,297.28	2,171,949.23
18	273,291.06	2,171,934.26
19	273,286.51	2,171,927.15
20	273,273.30	2,171,906.26
21	273,272.84	2,171,907.41
22	273,272.39	2,171,908.56
23	273,270.20	2,171,914.04
24	273,269.51	2,171,913.78
25	273,268.08	2,171,917.23
26	273,266.27	2,171,922.26
27	273,264.67	2,171,926.64
28	273,261.54	2,171,934.97
29	273,261.15	2,171,936.00
30	273,257.03	2,171,945.21
31	273,252.80	2,171,953.68
32	273,248.04	2,171,961.80
33	273,242.98	2,171,969.71
34	273,237.60	2,171,977.42

Coordenadas UTM Z14N WGS84		
Polígono 7		
Vértice	X	Y
35	273,232.02	2,171,985.10
36	273,226.39	2,171,990.95
37	273,225.97	2,171,991.38
38	273,225.43	2,171,991.94
39	273,217.96	2,171,997.81
40	273,209.57	2,172,002.30
41	273,201.18	2,172,006.53
42	273,192.69	2,172,010.46
43	273,184.08	2,172,014.12
44	273,176.17	2,172,016.97
45	273,166.59	2,172,018.30
46	273,156.93	2,172,018.83
47	273,147.26	2,172,018.86
48	273,137.59	2,172,018.62
49	273,127.95	2,172,017.76
50	273,118.40	2,172,016.23
51	273,108.90	2,172,014.50
52	273,106.78	2,172,014.08
53	273,099.43	2,172,012.57
54	273,099.28	2,172,014.01
55	273,099.30	2,172,014.10
56	273,099.28	2,172,014.09
57	273,103.28	2,172,030.52
58	273,103.25	2,172,030.30
59	273,103.29	2,172,030.47
60	273,104.13	2,172,033.91
61	273,105.06	2,172,033.91
62	273,106.70	2,172,034.09
63	273,111.90	2,172,034.67
64	273,111.92	2,172,034.68
65	273,115.55	2,172,035.08
66	273,126.03	2,172,036.05
67	273,136.33	2,172,039.81
68	273,146.93	2,172,042.61
69	273,157.63	2,172,041.01
70	273,168.10	2,172,037.84

Coordenadas UTM Z14N WGS84		
Polígono 7		
Vértice	X	Y
71	273,178.52	2,172,036.02

III.2.8 Coordenadas UTM del Polígono No. 8 de CUSTF

Coordenadas UTM Z14N WGS84		
Polígono 8		
Vértice	X	Y
1	273,180.96	2,171,957.38
2	273,190.26	2,171,950.98
3	273,197.28	2,171,942.14
4	273,198.14	2,171,940.66
5	273,198.81	2,171,939.51
6	273,202.87	2,171,932.51
7	273,207.19	2,171,922.42
8	273,210.04	2,171,912.61
9	273,210.92	2,171,909.86
10	273,213.05	2,171,903.75
11	273,213.59	2,171,902.35
12	273,214.61	2,171,900.10
13	273,216.86	2,171,898.72
14	273,219.09	2,171,896.39
15	273,226.28	2,171,890.26
16	273,233.61	2,171,884.89
17	273,240.04	2,171,879.19
18	273,243.04	2,171,875.51
19	273,245.21	2,171,872.62
20	273,245.44	2,171,872.30
21	273,246.23	2,171,870.16
22	273,246.54	2,171,869.29
23	273,248.01	2,171,866.19
24	273,246.06	2,171,863.11
25	273,246.01	2,171,863.10
26	273,228.27	2,171,835.05
27	273,227.77	2,171,834.18

Coordenadas UTM Z14N WGS84		
Polígono 8		
Vértice	X	Y
28	273,224.39	2,171,837.00
29	273,222.33	2,171,839.11
30	273,220.01	2,171,841.75
31	273,219.57	2,171,842.26
32	273,216.87	2,171,845.41
33	273,213.39	2,171,849.56
34	273,206.86	2,171,857.42
35	273,200.20	2,171,865.88
36	273,195.48	2,171,876.66
37	273,194.33	2,171,888.37
38	273,195.49	2,171,896.62
39	273,195.75	2,171,899.60
40	273,195.79	2,171,900.02
41	273,197.56	2,171,900.20
42	273,197.68	2,171,904.05
43	273,197.42	2,171,906.98
44	273,195.35	2,171,908.06
45	273,193.21	2,171,917.57
46	273,189.75	2,171,925.57
47	273,185.11	2,171,932.80
48	273,179.27	2,171,939.05
49	273,172.59	2,171,944.40
50	273,165.13	2,171,948.54
51	273,157.03	2,171,951.68
52	273,148.43	2,171,953.38
53	273,139.59	2,171,953.48
54	273,130.85	2,171,951.95
55	273,122.58	2,171,948.81
56	273,114.38	2,171,943.75
57	273,109.15	2,171,939.20
58	273,108.86	2,171,939.24
59	273,104.51	2,171,928.32
60	273,108.14	2,171,918.99
61	273,110.81	2,171,915.01
62	273,111.72	2,171,914.30
63	273,114.16	2,171,912.98

Coordenadas UTM Z14N WGS84		
Polígono 8		
Vértice	X	Y
64	273,117.23	2,171,913.02
65	273,120.17	2,171,911.34
66	273,126.93	2,171,906.42
67	273,135.84	2,171,897.43
68	273,135.86	2,171,897.42
69	273,137.22	2,171,896.05
70	273,143.29	2,171,887.06
71	273,151.57	2,171,879.13
72	273,158.89	2,171,869.85
73	273,162.24	2,171,858.75
74	273,163.86	2,171,847.26
75	273,164.00	2,171,838.11
76	273,166.49	2,171,830.76
77	273,170.09	2,171,824.01
78	273,175.39	2,171,818.58
79	273,182.21	2,171,812.12
80	273,188.53	2,171,805.03
81	273,189.05	2,171,804.34
82	273,190.21	2,171,802.79
83	273,194.32	2,171,797.34
84	273,198.39	2,171,791.97
85	273,194.81	2,171,786.24
86	273,196.45	2,171,784.74
87	273,185.62	2,171,767.61
88	273,184.86	2,171,768.28
89	273,184.88	2,171,768.31
90	273,180.96	2,171,772.01
91	273,175.83	2,171,767.40
92	273,170.79	2,171,772.85
93	273,170.12	2,171,782.25
94	273,168.62	2,171,783.67
95	273,173.21	2,171,788.78
96	273,173.23	2,171,788.83
97	273,172.58	2,171,789.48
98	273,170.09	2,171,792.09
99	273,169.78	2,171,792.41

Coordenadas UTM Z14N WGS84		
Polígono 8		
Vértice	X	Y
100	273,165.50	2,171,796.87
101	273,158.59	2,171,804.52
102	273,152.34	2,171,813.88
103	273,147.75	2,171,824.14
104	273,144.49	2,171,834.93
105	273,143.46	2,171,845.40
106	273,142.12	2,171,854.38
107	273,139.74	2,171,863.15
108	273,136.12	2,171,871.48
109	273,131.23	2,171,879.11
110	273,125.28	2,171,885.88
111	273,120.71	2,171,887.71
112	273,117.80	2,171,884.98
113	273,118.53	2,171,884.18
114	273,118.58	2,171,878.09
115	273,118.36	2,171,867.89
116	273,117.82	2,171,857.72
117	273,117.81	2,171,847.56
118	273,117.75	2,171,837.39
119	273,117.43	2,171,827.22
120	273,116.63	2,171,817.07
121	273,115.20	2,171,807.00
122	273,114.05	2,171,797.61
123	273,114.00	2,171,788.40
124	273,115.21	2,171,779.25
125	273,118.00	2,171,770.47
126	273,118.72	2,171,768.79
127	273,118.73	2,171,768.77
128	273,121.63	2,171,762.06
129	273,126.32	2,171,754.24
130	273,131.62	2,171,746.87
131	273,137.30	2,171,739.77
132	273,142.20	2,171,735.00
133	273,143.45	2,171,733.93
134	273,143.93	2,171,733.52
135	273,151.64	2,171,727.14

Coordenadas UTM Z14N WGS84		
Polígono 8		
Vértice	X	Y
136	273,154.67	2,171,723.26
137	273,156.53	2,171,721.62
138	273,145.78	2,171,704.60
139	273,136.84	2,171,701.05
140	273,132.74	2,171,703.61
141	273,124.41	2,171,709.21
142	273,124.28	2,171,710.45
143	273,127.93	2,171,718.26
144	273,121.10	2,171,723.82
145	273,113.34	2,171,732.63
146	273,107.70	2,171,742.93
147	273,103.55	2,171,753.78
148	273,103.00	2,171,765.61
149	273,100.53	2,171,776.33
150	273,098.33	2,171,787.14
151	273,095.68	2,171,798.27
152	273,099.35	2,171,808.81
153	273,100.76	2,171,818.52
154	273,100.90	2,171,819.86
155	273,101.06	2,171,821.30
156	273,101.81	2,171,828.28
157	273,102.59	2,171,838.07
158	273,103.14	2,171,847.88
159	273,103.54	2,171,857.70
160	273,102.88	2,171,867.52
161	273,102.03	2,171,877.30
162	273,101.41	2,171,883.13
163	273,101.46	2,171,887.09
164	273,101.29	2,171,896.90
165	273,101.20	2,171,897.84
166	273,099.68	2,171,904.60
167	273,099.51	2,171,905.00
168	273,095.29	2,171,913.19
169	273,088.00	2,171,920.23
170	273,087.20	2,171,920.74
171	273,071.34	2,171,923.99

Coordenadas UTM Z14N WGS84		
Polígono 8		
Vértice	X	Y
172	273,070.53	2,171,923.90
173	273,067.84	2,171,922.38
174	273,057.82	2,171,918.92
175	273,048.07	2,171,915.85
176	273,038.26	2,171,912.86
177	273,028.38	2,171,909.98
178	273,018.43	2,171,907.24
179	273,014.92	2,171,906.44
180	273,015.47	2,171,905.54
181	273,012.48	2,171,903.00
182	272,998.17	2,171,895.70
183	272,988.17	2,171,895.93
184	272,976.65	2,171,897.22
185	272,970.16	2,171,901.96
186	272,966.75	2,171,904.77
187	272,964.49	2,171,907.06
188	272,954.85	2,171,915.58
189	272,946.19	2,171,922.65
190	272,940.33	2,171,927.67
191	272,938.77	2,171,928.01
192	272,937.49	2,171,927.76
193	272,937.29	2,171,927.70
194	272,955.85	2,171,940.63
195	272,956.41	2,171,939.66
196	272,955.70	2,171,939.24
197	272,954.50	2,171,939.15
198	272,954.48	2,171,938.94
199	272,954.36	2,171,937.41
200	272,957.99	2,171,932.63
201	272,966.23	2,171,929.37
202	272,970.96	2,171,927.44
203	272,974.32	2,171,929.03
204	272,976.13	2,171,929.85
205	272,985.41	2,171,934.66
206	272,994.47	2,171,939.60
207	272,998.10	2,171,941.66

Coordenadas UTM Z14N WGS84		
Polígono 8		
Vértice	X	Y
208	272,999.74	2,171,942.61
209	273,001.06	2,171,943.39
210	273,001.13	2,171,943.43
211	273,003.32	2,171,944.72
212	273,003.78	2,171,945.00
213	273,008.95	2,171,948.14
214	273,011.93	2,171,950.00
215	273,021.40	2,171,949.40
216	273,031.05	2,171,948.44
217	273,040.63	2,171,948.44
218	273,050.00	2,171,949.63
219	273,057.71	2,171,952.00
220	273,063.40	2,171,955.31
221	273,065.62	2,171,956.75
222	273,073.31	2,171,961.69
223	273,079.97	2,171,965.42
224	273,081.16	2,171,966.02
225	273,089.33	2,171,969.66
226	273,090.97	2,171,970.21
227	273,091.17	2,171,970.28
228	273,092.26	2,171,970.65
229	273,098.33	2,171,971.92
230	273,110.94	2,171,972.28
231	273,123.87	2,171,975.97
232	273,136.72	2,171,978.66
233	273,149.74	2,171,976.89
234	273,161.38	2,171,970.70
235	273,170.62	2,171,961.73
236	273,180.96	2,171,957.38

Coordenadas UTM Z14N WGS84		
Polígono interno 8A (no CUSTF)		
Vértice	X	Y
1	273,221.09	2,171,856.21
2	273,223.41	2,171,851.32
3	273,229.80	2,171,853.38

Coordenadas UTM Z14N WGS84		
Polígono interno 8A (no CUSTF)		
Vértice	X	Y
4	273,231.55	2,171,856.14
5	273,231.12	2,171,861.70
6	273,226.57	2,171,865.22
7	273,219.75	2,171,873.14
8	273,214.27	2,171,882.01
9	273,209.90	2,171,891.36
10	273,208.08	2,171,894.28
11	273,206.73	2,171,894.32
12	273,206.41	2,171,894.33
13	273,205.03	2,171,894.38
14	273,204.49	2,171,892.20
15	273,204.34	2,171,887.69
16	273,204.38	2,171,887.08
17	273,204.79	2,171,878.78
18	273,207.94	2,171,870.44
19	273,215.36	2,171,864.17
20	273,221.09	2,171,856.21

Coordenadas UTM Z14N WGS84		
Polígono interno 8B (no CUSTF)		
Vértice	X	Y
1	272,980.21	2,171,907.20
2	272,982.48	2,171,906.92
3	272,998.04	2,171,907.05
4	272,998.30	2,171,907.08
5	272,998.55	2,171,907.14
6	272,998.78	2,171,907.25
7	272,998.99	2,171,907.40
8	272,999.17	2,171,907.58
9	273,002.52	2,171,911.55
10	273,002.67	2,171,911.76
11	273,002.78	2,171,911.99
12	273,002.85	2,171,912.23
13	273,002.87	2,171,912.49

Coordenadas UTM Z14N WGS84		
Polígono interno 8B (no CUSTF)		
Vértice	X	Y
14	273,002.86	2,171,912.74
15	273,002.80	2,171,912.99
16	273,002.70	2,171,913.22
17	273,002.56	2,171,913.44
18	273,002.39	2,171,913.63
19	273,002.18	2,171,913.78
20	273,001.96	2,171,913.90
21	273,001.72	2,171,913.98
22	273,001.46	2,171,914.02
23	273,001.21	2,171,914.01
24	272,989.17	2,171,912.84
25	272,977.10	2,171,912.02
26	272,976.85	2,171,911.98
27	272,976.60	2,171,911.90
28	272,976.38	2,171,911.78

Coordenadas UTM Z14N WGS84		
Polígono interno 8B (no CUSTF)		
Vértice	X	Y
29	272,976.17	2,171,911.63
30	272,976.00	2,171,911.44
31	272,975.86	2,171,911.23
32	272,975.76	2,171,910.99
33	272,975.70	2,171,910.74
34	272,975.68	2,171,910.48
35	272,975.71	2,171,910.23
36	272,975.78	2,171,909.98
37	272,975.89	2,171,909.75
38	272,976.04	2,171,909.54
39	272,976.22	2,171,909.36
40	272,978.59	2,171,907.40
41	272,979.61	2,171,907.28
42	272,980.21	2,171,907.20

En el Anexo 5 se presentan de manera digital, las ocho poligonales de CUSTF previamente señalados, así como los cuadros de coordenadas en formato xlsx.

Por su parte, dentro del Anexo 1 se presenta el título de propiedad que demuestra la legal posesión del AP.